

Bonhams



California Jewels

Los Angeles | April 15, 2019



California Jewels

Los Angeles | Monday April 15 , 2019, at 9.30am

BONHAMS

7601 West Sunset Blvd,
Los Angeles, CA 90046
bonhams.com

SALE

Monday April 15, 2019

Session 1: 9.30am-1pm,
Lots 1-200
Session 2: 2pm-end,
Lots 201-413

PREVIEW

Los Angeles

Thursday April 11,
12pm to 5pm
Friday April 12,
12pm to 5pm
Saturday April 13,
12pm to 5pm
Sunday April 14,
12pm to 5pm

SALE NUMBER:

25329

CATALOG:

\$35.00

ILLUSTRATIONS

Front cover: Lot 276
Inside front cover: Lots
3,116,155,225,229,246,365
Inside back cover: Lot 321
Back cover: Lot 232

BIDS

+1 (323) 850 7500
+1 (323) 850 6090 fax
Email: bids.us@bonhams.com
To bid via the internet please visit
www.bonhams.com

Telephone bidding

Bidding by telephone will only
be accepted on a lot with a low
estimate in excess of \$1000.

Please note that bids should be
submitted no later than 4pm on
the day prior to the sale. New
bidders must also provide proof
of identity when submitting bids.
Failure to do this may result in your
bid not being processed.

Live online bidding is available for this sale

Please email bids@bonhams.com
with 'live bidding' in the subject
line 48 hours before the auction
to register for this service.

INQUIRIES

Los Angeles

Dana Ehrman, GG
Director, LA Jewelry
Alexis Vourvoulis, GG
Emily Waterfall
Kelly Sitek, GG

ADMINISTRATOR

Alexandra Schettini
alexandra.schettini@bonhams.com
+1 (323) 436 5424

Jean Ghika
Global Head of Jewelry
jean.ghika@bonhams.com
+44 207 468 8282

New York:

Brett O'Connor, Senior
International Jewelry Director
Caroline Morrissey,
Head of Sales, US Jewelry
Camille Barbier, GG
+1 212 461 6526

San Francisco:

Shannon Beck, GG
Senior Specialist
+1 (415) 503 3306

CLIENT SERVICES

Monday to Friday 9am-5pm
+1 (323) 850 7500
+1 (323) 850 6090 Fax

Please see pages 125 to 127 for
bidder information including
Conditions of Sale, after-sale
collection and shipment.

Please note that irrespective
of origin, jadeite and rubies (and
any jewelry pieces that contain
them) may now be imported into
the United States.

REGISTRATION IMPORTANT NOTICE

Please note that all customers,
irrespective of any previous activity
with Bonhams, are required to
complete the Bidder Registration
Form in advance of the sale. The
form can be found at the back
of every catalogue and on our
website at www.bonhams.com
and should be returned by email or
post to the specialist department
or to the bids department at
bids.us@bonhams.com

To bid live online and / or
leave internet bids please go to
www.bonhams.com/auctions/25329
and click on the Register to bid link
at the top left of the page.

IMPORTANT NAMES & NOTICES

DIAMONDS, COLORED STONES & PEARLS

The Jewelry department of Bonhams & Butterfields recognizes that there are many various forms of treatments and enhancements used in diamonds and colored stones in order to improve their appearance and or color. Techniques such as heat treatment have been used to improve the color and transparency of both sapphires and rubies in addition to other gemstones. Techniques such as oiling have been used to enhance the clarity of emeralds while dying has been used to effect the color of jade. Techniques such as heat treatment, oiling, resin impregnation, irradiation, color diffusion, dying, fracture filling, and HTHP are just a few off the techniques that are in use today. Prospective buyers are therefore reminded that unless otherwise noted in our catalog description it must be assumed that some form of enhancement may have been used and that such treatment may not always be permanent or detectable and that our estimates have taken such possibilities into account. As a matter of policy, Bonhams & Butterfields endeavors to obtain certificates from recognized gemological laboratories when such certificates are deemed crucial to the authenticity of a gemstone. It is not possible however to gain certificates for all items offered for sale and it is therefore recommended where there is no mention of a certificate that all prospective buyers consult with one of our department specialists prior to purchase of such items.

PLEASE NOTE: A number of laboratories issue certificates that give more detailed descriptions of gemstones, however there may not be consensus between different laboratories on the degrees, or types of treatment for any particular gemstone. Neither is there necessarily consensus between different laboratories, or private appraisers, on the grading of diamonds. All gemstone weights are approximations only and although an independent laboratory grading may be used in the catalog text, we cannot guarantee such gradings.

Images shown may appear smaller or larger than actual size.

Although we endeavor to mention in our descriptions significant defects, needed repairs, absent stones and the like, **WE DO NOT GUARANTEE THAT THE DESCRIPTIONS ARE COMPREHENSIVE.** Please examine all lots carefully. It is the responsibility of the prospective bidder, or his agent, to determine the condition of lots during the preview. Condition reports have been created for most lots in this auction, and are available upon request. Please contact the Jewelry department at least two days prior to the sale date for additional information.

It is the responsibility of the buyer to investigate any applicable restrictions on purchased property and to obtain any export or import licenses and/or certificates as well as any other required documentation before shipping. The buyer's inability to export or import any such items or to do so timely shall not serve as the basis for any cancellation or rescission of the sale or any delay in payment. Prospective buyers who are uncertain as to whether a lot is subject to these restrictions or any other restrictions on importation or exportation are advised to consult with the specialist department in which the property is offered.

REGULATED SPECIES MATERIALS AND CITES PERMITS

The export of a lot from the United States or import into certain countries may be subject to export or import regulations, licensure and/or other restrictions; in particular, lots containing plant or animal materials such as ivory, rhinoceros horn, tortoiseshell, coral, whalebone or certain types of woods, irrespective of age or value, may require the granting of one or more export or import licenses or certificates, or may be banned from import altogether by some countries. Moreover, the ability to obtain an export license or certificate does not insure the ability to obtain an import license or certificate in another country. Lots that contain such regulated species materials may also not be eligible for exportation or for re-importation into the United States if they are not at least 100 years of age, and, under current law, lots containing African Elephant Ivory may no longer be re-imported into the United States regardless of age. In addition, resales of lots containing certain regulated species materials may be subject to restrictions in some jurisdictions.

Lots noted in the catalog with a **Y** next to the lot number contain one or more such regulated plant or animal materials. **It is the buyer's responsibility to investigate any such restrictions and to obtain any relevant export or import licenses. Please note that this process is governed by local authorities and may take considerable time. Regardless of any delay in the obtaining of an export or import license or certificate or denial of a license's or certificate's issuance, purchased lots shall be paid for in accordance with the Conditions of Sale, and any such delay or denial shall not serve as the basis for cancellation of any sale.** Prospective buyers are advised to obtain information from the relevant regulatory authorities regarding export and import restrictions, requirements, and costs prior to bidding.

Prospective buyers should also check with their local (e.g. state) regulatory authorities regarding any local restrictions and/or permit requirements that may apply with respect to purchases of regulated species materials, including without limitation purchases of items containing elephant ivory or rhino horn. For example, we are advised that New York buyers of any lot containing elephant or mammoth ivory or rhino horn will be responsible for obtaining a New York State permit before taking possession of the lot within New York State, and that the State of New Jersey has banned the import of items containing elephant or marine mammal ivory or rhino horn into that state.

Upon request, Bonhams can refer the purchaser to a third party agent to assist the purchaser in attempting to obtain the appropriate licenses and/or certificates. However, there is no assurance that any necessary licenses or certificates can be obtained. Please contact the Specialist Department for a suggested list of shipping agents prior to placing a bid if you are uncertain as to whether a lot is subject to export/import license or certificate requirements or related restrictions.

WATCHES

Although we endeavor to mention in our descriptions significant defects, needed repairs, absent stones and the like, **WE DO NOT GUARANTEE THAT THE DESCRIPTIONS ARE COMPREHENSIVE.** Please examine all watches carefully. It is the responsibility of the prospective bidder, or his agent, to determine the condition of watches during the preview. Except as expressly set forth in the Conditions of Sale, all watches are sold "as is". We do not guarantee the accuracy or operation of any watch function such as timekeeping, chronograph, calendar, repeater or register.

We make no judgments as to whether diamond dials or diamond bezels originated at the factory or are later additions.

INDEX**INCLUDING PROPERTY FROM**

NAME	LOT NUMBER	
Adler	340	Property from a Honolulu Collector
Alleto & Co.	381	Property from a Santa Barbara Collection
Andrew Clunn	149	Property from a Private Collection, Malibu, California
Angela Cummings for Tiffany & Co.	5, 232	Property from the Maurice and Joanna Sullivan Family Foundation
Asprey	142	
Buccellati	77, 78, 79	Property from a New York Estate
Bulgari	4, 154, 157, 254, 256	Property from a New York Socialite
Cartier	119, 146, 225, 239, 246, 276	Property Passed Through the Family of Frederick Hastings Rindge and May Knight Rindge, Malibu Ranch, California
Castellani	392	
Cellini	397	
Charles Krypell	252	Property from the Estate of a Los Angeles Lady
Chaumet	24, 356, 371	Property of a Lady
Chopard	141	
David Webb	145	Property from the Estate of a Beverly Hills Lady
Denise Robergé	129	Property from a Los Angeles Lady
Elsa Peretti for Tiffany & Co.	131	
Fred Leighton	43	
Garrard	23	
Gustave Sandoz	64	
Hermes	235	
Kutchinsky for DeLaneau	167	
Marina B.	12	
Masiera	395, 399, 401, 402, 403, 404, 405, 408, 409, 410, 411, 412, 413	
McTeigue	374	
Nerso	133	
Oscar Heyman Brothers	147	
Pomellato	170	
Laykin & Co.,	227	
Rolex	143	
Sabbadini	365, 385	
Schlumberger for Tiffany & Co.	230	
Seaman Schepps	69	
Tiffany & Co.	7, 25, 92, 115, 150, 178, 229, 282, 287, 306	
Van Cleef & Arpels	128, 376	
Vera Wang	293	
Vhernier	45, 46	
Waslikoff	335	



1

2

4

3



5



6

1^Y

A LAPIS LAZULI AND CORAL CHAIN

mounted in 18k gold; gross weight approximately: 89 grams; length: 38in.

\$2,000 - 3,000

To be sold without reserve

2^Y

A PAIR OF CORAL, LAPIS LAZULI AND DIAMOND EAR CLIPS

mounted in 18k gold; dimensions: 2 1/4 x 1 3/4in.

\$2,000 - 3,000

PROPERTY FROM A HONOLULU COLLECTOR

3^Y

A COLLECTION OF THREE CORAL, CIRTINE AND DIAMOND BROOCHES

mounted in 14k and 18k gold; dimensions: 2 x 1 1/4in., 1 1/2 x 1 1/2in. and 1 3/4 x 1 1/8in.; one signed WINC

\$2,000 - 3,000

4

A CITRINE 'PYRAMID' RING, BULGARI, ITALIAN

mounted in 18k gold; size: 6 1/2; signed Bulgari

\$1,500 - 2,000

5

A LAPIS LAZULI BANGLE AND EAR CLIP SET, ANGELA CUMMINGS FOR TIFFANY & CO.

mounted in 18k gold; gross weight approximately: 92 grams; bangle diameter: 2 1/8in.; ear clip length: 1in.; signed T & Co.

\$7,000 - 10,000

6^Y

A PAIR OF CORAL, LAPIS LAZULI AND DIAMOND EAR PENDANTS

mounted in 18k bi-color gold; length: 2 7/8in.

\$3,000 - 5,000



11

10

9



7



8



12

PROPERTY FROM A HONOLULU COLLECTOR

7

TWO BROOCHES, TIFFANY & CO.

mounted in 18k gold; gross weight approximately: 27 grams; dimensions: 2 1/2 x 1 1/4in. and 2 x 1 3/8in.; signed Tiffany & Co.; one signed Paloma Picasso with English hallmarks

\$2,000 - 3,000

8

A PAIR OF AZURMALACHITE, JASPER AND DIAMOND EAR PENDANTS

mounted in 18k bi-color gold; length: 2in.

\$1,800 - 2,200

PROPERTY FROM A SANTA BARBARA COLLECTION

9

A LAPIS LAZULI BEAD NECKLACE AND BRACELET SET

beads approximately: 11.0mm; mounted in 14k gold; necklace length: 49in., bracelet length: 7 1/2in.

\$1,900 - 2,600

10^Y

A CORAL AND LAPIS LAZULI BRACELET

mounted in 18k gold; length: 7in.

\$2,000 - 3,000

11

A DIAMOND AND BLACK OPAL PENDANT/CENTERPIECE

centering an oval cabochon black opal approximately: 20.38 x 16.58 x 9.27mm; mounted in 18k gold; estimated total diamond weight: 4.60cts; dimensions: 1 3/4 x 1 1/2in.

\$2,000 - 3,000

PROPERTY FROM A PRIVATE COLLECTION, MALIBU, CALIFORNIA

12

A BRITISH SOVEREIGN COLLAR, MARINA B., FRENCH

mounted in stainless steel and 18k white gold; gross weight approximately: 328 grams; length: 14in.; signed Marina B., no. 3071729; with French assay and maker's marks

\$5,000 - 7,000



13

14

13

A CULTURED PEARL, COLORED CULTURED PEARL, RUBY AND DIAMOND PENDANT/CLIP

pearls approximately: 5.8 to 19.5mm; mounted in 18k gold; dimensions: 3 1/8 x 3in. (grey pearls untested for origin of color)

\$2,000 - 3,000

PROPERTY FROM THE MAURICE AND JOANNA SULLIVAN FAMILY FOUNDATION

14

A COLORED CULTURED PEARL AND DIAMOND NECKLACE

pearls approximately: 10.2 to 14.7mm; mounted in 14k gold; estimated total diamond weight: 2.75cts; length: 19 1/2in. (grey pearls untested for origin of color)

\$2,000 - 2,500

15^Y

A PAIR OF CORAL AND DIAMOND EAR PENDANTS

mounted in 18k bi-color gold; length: 2 1/4in.

\$2,500 - 3,500

PROPERTY FROM THE MAURICE AND JOANNA SULLIVAN FAMILY FOUNDATION

16

A COLORED CULTURED PEARL AND DIAMOND RING

pearl approximately: 15.5mm; mounted in 18k bi-color gold; size: 4 3/4 (grey pearl untested for origin of color)

\$750 - 1,100
To be sold without reserve

PROPERTY FROM A NEW YORK ESTATE

17^Y

A COLLECTION OF CORAL AND COLORED CULTURED PEARL JEWELRY

comprising two necklaces and a bracelet; mounted in 14k gold; lengths: 16 1/2in., 15in. and 7in. (grey pearls untested for origin of color)

\$2,000 - 3,000



15



16



17





18

18
A BI-COLOR TOURMALINE AND DIAMOND RING
centering a cut-cornered rectangular step-cut bi-color tourmaline approximately: 16.29 x 11.59 x 6.71mm; mounted in 18k gold; size: 6 3/4

\$2,000 - 3,000
To be sold without reserve



19

19
A PAIR OF GREEN TOURMALINE AND DIAMOND EAR CLIPS
mounted in 18k bi-color gold; estimated total diamond weight: 1.10cts; dimensions: 1 x 3/4in.

\$2,500 - 3,500

20
A GREEN TOURMALINE AND DIAMOND COLLAR
mounted in 18k bi-color gold; estimated total diamond weight: 1.10cts; gross weight approximately: 64 grams; length: 17 1/2in.; with maker's mark

\$2,000 - 3,000



20



21

PROPERTY FROM A HONOLULU COLLECTOR
21
THREE BLUE TOPAZ, PINK TOURMALINE AND AMETHYST RINGS
mounted in 14k gold, 18k bi-color gold and platinum; sizes: 7

\$1,500 - 2,000





22

23

24

22

A RUBELLITE AND DIAMOND CENTERPIECE AND EAR CLIPS

mounted in 18k gold; estimated total diamond weight: 3.85cts; centerpiece diameter: 1in.; ear clip diameter: 3/4in.

\$2,000 - 3,000

PROPERTY FROM A HONOLULU COLLECTOR

23

AN ALEXANDRITE, CITRINE AND DIAMOND RING, GARRARD, LONDON, 1993

mounted in 18k gold; size: 6; signed G & Co., with English hallmarks

\$3,000 - 5,000

24

A GOLD NECKLACE AND BRACELET SET, CHAUMET, PARIS

18k gold; gross weight approximately: 158 grams; necklace length: 20in; bracelet length: 7 3/4in.; signed Chaumet, Paris, no. 143072 and no. 143063; with French assay and maker's marks

\$5,000 - 7,000



26

27



25



28

25
**A DIAMOND AND COLORED DIAMOND
 'SOLESTE' ETERNITY BAND, TIFFANY
 & CO.**

mounted in platinum and 18k rose gold; size: 7; signed Tiffany & Co., no. 29285799; with signed pouch (pink diamonds untested for origin of color)

\$2,000 - 3,000

Accompanied by a copy of the Tiffany & Co. appraisal, dated July 22, 2014, stating the diamond as: Fancy Pink color.

26
**A PAIR OF PURPLE-PINK SPINEL AND
 DIAMOND EAR CLIPS AND PENDANT**

mounted in 18k white gold; estimated total diamond weight: 5.05cts; pendant dimensions: 1 7/8 x 1 1/8in.; ear clip dimensions: 1 x 7/8in.

\$3,000 - 5,000
To be sold without reserve

27
A DIAMOND NECKLACE
mounted in platinum; estimated total diamond weight: 8.00cts; gross weight approximately: 41 grams; length: 16in.

\$3,000 - 5,000
To be sold without reserve

28
**A COLOR CHANGE SAPPHIRE AND
 DIAMOND RING**

centering an oval brilliant step-cut color change sapphire weighing: 9.70cts; mounted in platinum; estimated total diamond weight: 3.65cts; size: 6 1/4

\$9,500 - 12,000

Accompanied by GIA report #7238439501, dated September 2, 2016, stating the sapphire as: Natural Color Change, no indications of heat enhancement.



29



30



31



32



33

29

A TANZANITE AND DIAMOND RING

centering a rectangular step-cut tanzanite weighing: 18.69cts; mounted in platinum; size: 6 1/4

\$6,000 - 8,000

30

A DIAMOND RING

mounted in 18k white gold; estimated total diamond weight: 2.85cts; size: 5 3/4

\$3,000 - 5,000

31

A PAIR OF DIAMOND BANGLES

mounted in rhodium plated 14k gold; estimated total diamond weight: 7.40cts; gross weight approximately: 29 grams; diameters: 2 1/2in.

\$5,000 - 7,000

32

A PAIR OF COLORED SAPPHIRE AND DIAMOND EAR PENDANTS

mounted in 18k white gold; estimated total diamond weight: 2.00cts; length: 2 3/4in.

\$2,000 - 3,000

33

A DIAMOND BRACELET

mounted in 14k bi-color gold; estimated total diamond weight: 4.50cts; gross weight approximately: 64 grams; length: 7 3/4in.; width: 1 1/8in.

\$5,000 - 7,000



35

36

37

34

34
A PAIR OF DIAMOND HOOP EARRINGS
mounted in 18k rose gold; estimated total diamond weight: 5.55cts; diameter: 1 3/4in.

\$4,000 - 6,000

35
A DIAMOND LONG CHAIN
mounted in 18k rose gold; estimated total diamond weight: 44.80cts ; length: 60in.

\$8,000 - 12,000

36
A DIAMOND RING
mounted in 18k rose gold; estimated total diamond weight: 8.70cts; size: 6 1/2

\$6,500 - 7,500

37
A PAIR OF DIAMOND AND COLORED DIAMOND EAR PENDANTS
mounted in 18k bi-color gold; estimated total diamond weight: 4.40cts; length: 2 3/8in. (pink diamonds untested for origin of color)

\$5,000 - 7,000



38

38

A PAIR OF DIAMOND EAR PENDANTS

mounted in 18k rose gold; total diamond weight: 13.18cts; gross weight approximately: 25 grams; length: 1 7/8in.

\$3,000 - 5,000



39

39

A COLORED DIAMOND AND DIAMOND PENDANT NECKLACE AND RING

necklace mounted in 18k bi-color gold and platinum; ring mounted in 18k rose gold; estimated total diamond weight: 9.60cts; necklace length: 15in.; pendant length: 2 1/2in.; ring size: 5 1/4 (orange diamonds untested for origin of color)

\$2,000 - 3,000

To be sold without reserve



40

40

A DIAMOND AND COLORED DIAMOND KINETIC RING

mounted in rhodium plated 18k white gold; size: 6 1/2 (yellow diamonds untested for origin of color)

\$3,000 - 5,000

41

A PINK SAPPHIRE, YELLOW SAPPHIRE AND DIAMOND RING

mounted 18k gold; estimated total diamond weight: 4.10cts; size: 6 1/4

\$2,500 - 3,500



41



42



43



44



46



45

PROPERTY FROM A NEW YORK SOCIALITE, LOTS 42-46

42

A PAIR OF DIAMOND EAR STUDS

centering two old mine-cut diamonds approximately: 1.15cts and 1.15cts; mounted in silver-topped gold; diameter: 1/4in.

\$2,000 - 3,000

43

A PAIR OF DIAMOND HOOP EARRINGS, FRED LEIGHTON

mounted in platinum; estimated total diamond weight: 6.50cts; diameter: 1 1/16in.; signed Fred Leighton

\$3,000 - 5,000

44

A DIAMOND BRACELET

mounted in 18k white gold; estimated total diamond weight: 4.50cts; length: 6 1/2in.

\$2,500 - 3,500

45

A DIAMOND RING, VHERNIER, ITALIAN

mounted in 18k bi-color gold; estimated total diamond weight: 5.50cts; size 6 1/2; signed Vhernier, no. 21B; with Italian marks

\$5,000 - 7,000

46

A PAIR OF DIAMOND EAR CLIPS, VHERNIER, ITALIAN

mounted in 18k bi-color gold; estimated total diamond weight: 7.50cts; dimensions: 7/8 x 3/4in.; signed Vhernier, no. 20B; with Italian marks

\$7,000 - 9,000





47

47
A PAIR OF DIAMOND AND SAPPHIRE EAR CLIPS
mounted in 18k white gold; estimated total diamond weight: 3.00cts; dimensions: 1 x 1in.

\$3,000 - 5,000

48
A DIAMOND RING
mounted in 18K white gold; estimated total diamond weight: 4.00cts; size: 5 1/4

\$2,000 - 3,000
To be sold without reserve



51

51
A SAPPHIRE AND DIAMOND RING
centering an oval brilliant step-cut sapphire approximately: 10.11 x 8.62 x 5.48mm; mounted in platinum; estimated total diamond weight: 1.90cts; size: 6 3/4

\$4,500 - 5,500

Accompanied by GIA report #2191388894, dated June 4, 2018, stating the sapphire as: Natural, Sri Lankan, evidence of heat enhancement.



50

49
A SAPPHIRE AND DIAMOND BRACELET
mounted in platinum; estimated total diamond weight: 10.00cts; gross weight approximately: 75 grams; length: 7in.

\$20,000 - 30,000

50
A DIAMOND CLIP
mounted in platinum; estimated total diamond weight: 2.00cts; dimensions: 2 1/2 x 1 1/2in.

\$2,000 - 3,000



48



52



54



53



55



56

52

A PAIR OF DIAMOND AND SAPPHIRE EAR PENDANTS

centering two round brilliant-cut diamonds approximately: 1.00ct and 1.00ct; mounted in 18k white gold; length: 1 1/4in.

\$3,000 - 5,000

53

A DIAMOND BROOCH

mounted in 18k white gold; estimated total diamond weight: 8.50cts; gross weight approximately: 35 grams; dimensions: 2 1/16 x 1 3/8in.

\$4,000 - 6,000

54

A PAIR OF DIAMOND EAR CLIPS

mounted in 14k white gold; estimated total diamond weight: 6.50cts; dimensions: 1 x 7/8in.

\$2,500 - 3,500

55

A DIAMOND ETERNITY BAND

mounted in platinum; estimated total diamond weight: 5.50cts; size: 8 1/2

\$3,000 - 5,000

56

A SEMI-BLACK OPAL AND DIAMOND RING

centering an oval cabochon semi-black opal approximately: 11.21 x 9.27 x 3.96mm; mounted in 18k white gold; estimated total diamond weight: 1.45cts; size: 7 1/2

\$1,800 - 2,000

To be sold without reserve



57

57
**AN EMERALD, RUBY AND DIAMOND
NECKLACE**

*mounted in silver-topped gold; 18k gold
chain; estimated total diamond weight:
16.00cts; length: 19in.*

\$8,000 - 12,000



58



59

60

61



62

**58
AN ART DECO RUBY AND DIAMOND
BROOCH, CIRCA 1920**

mounted in platinum-topped gold; estimated total diamond weight: 0.95ct; length: 1 3/4in.; with French import and European marks

\$1,500 - 2,000

**59
A PEARL AND DIAMOND TASSEL
PENDANT**

pearls approximately: 1.4 to 4.4mm; mounted in silver, 14k gold and silver-topped gold; length: 4in.

\$1,000 - 1,500

To be sold without reserve

**60
A JADEITE NECKLACE**

mounted in 14k gold; length: 17in.

\$2,000 - 3,000

Accompanied by Mason Kay report #190221-2349, dated February 21, 2019, stating: Natural Jadeite Jade-No Dye or Impregnation detected-'A' Jade.

**61
A JADEITE, DIAMOND AND PEARL
BRACELET WITH A JADEITE RING**

pearl approximately: 8.7mm; mounted in 14k gold and silver-topped gold; bracelet length: 6 1/2in.; ring size: 10 1/4

\$2,000 - 3,000

see Department for Mason Kay Reports

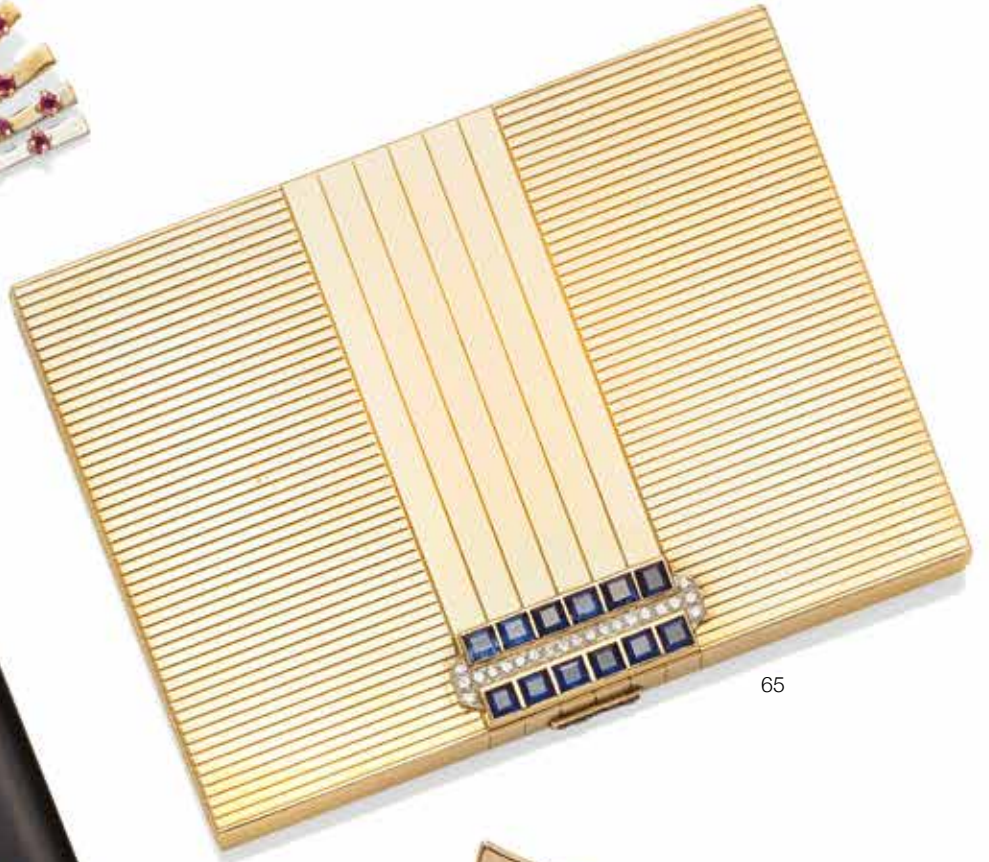
**62
A RUBY, DIAMOND AND ENAMEL RING**

mounted in 14k gold; size: 7

\$1,200 - 1,800



63



65



64



66





67



68



69



63

A RETRO RUBY AND DIAMOND BROOCH, CIRCA 1940

mounted in 14k bi-color gold; dimensions: 3 x 2in.

\$2,000 - 3,000

64

AN ART DECO ENAMEL CIGARETTE CASE, GUSTAVE SANDOZ, FRENCH, CIRCA 1925

mounted in silver and 14k gold; gross weight approximately: 187 grams; length: 5 1/16in.; with maker's mark and French assay marks

\$3,000 - 5,000

65

A DIAMOND AND SAPPHIRE CIGARETTE BOX, CIRCA 1938

engraved "Charolotte, 1938"; mounted in 14k gold and platinum; gross weight approximately: 119 grams; dimensions: 4 1/8 x 3in.

\$4,000 - 6,000

66

A RETRO JADEITE, RUBY AND DIAMOND BROOCH AND EAR CLIP SET, CIRCA 1940

mounted in 14k rose gold; brooch dimensions: 3 3/8 x 2 1/4in.; ear clip dimensions: 1 1/2 x 1in.

\$3,000 - 5,000

67

A RUBY AND DIAMOND RING

centering a round cabochon ruby weighing: 10.71cts; mounted in platinum; size: 9

\$2,000 - 3,000

Accompanied by AGL report #8085125, dated February 18, 2016, stating the ruby as: Natural, Burmese origin, no indication of heat enhancement.

68

A RUBY AND DIAMOND RING

mounted in platinum; estimated total diamond weight: 2.60cts; size: 3, with sizing spring

\$3,000 - 4,000

69

A PAIR OF RETRO STAR RUBY AND DIAMOND CLIPS, SEAMAN SCHEPPS, CIRCA 1945

mounted in 18k bi-color gold; estimated total diamond weight: 4.00cts; dimensions: 2 x 2in.; signed Seaman Schepps

\$5,000 - 7,000



70

71



72

70

A PRASIOLITE AND DIAMOND RING WITH A COLORED DIAMOND RING

mounted in 18k gold; estimated total diamond weight: 3.00cts; sizes: 7 and 7 1/2 (brown diamonds untested for origin of color)

\$2,500 - 3,500

PROPERTY FROM A NEW YORK ESTATE

**71
A GOLD NECKLACE, GERMAN**

14k gold; weighing approximately: 32 grams; length: 15in.; stamped Germany

\$1,000 - 1,500
To be sold without reserve

72

AN AMETHYST BRACELET

mounted in 14k gold; length: 6 1/2in.

\$1,800 - 2,200



73

74



75



76

73

AN AQUAMARINE RING

oval modified brilliant-cut aquamarine weighing: 25.85cts; mounted in 14k gold; size: 6 1/2

\$2,000 - 3,000

Accompanied by GIA report #2181143320, dated February 1, 2017, stating the aquamarine as: Natural.

74

A GOLD BRACELET

18k gold; weighing approximately: 62 grams; length: 7 1/2in.

\$1,500 - 2,500

75

A RETRO GOLD BRACELET, CIRCA 1945

14k bi-color gold; weighing approximately: 120 grams; length: 7 3/4in.; width: 1 3/4in.

\$2,200 - 2,800

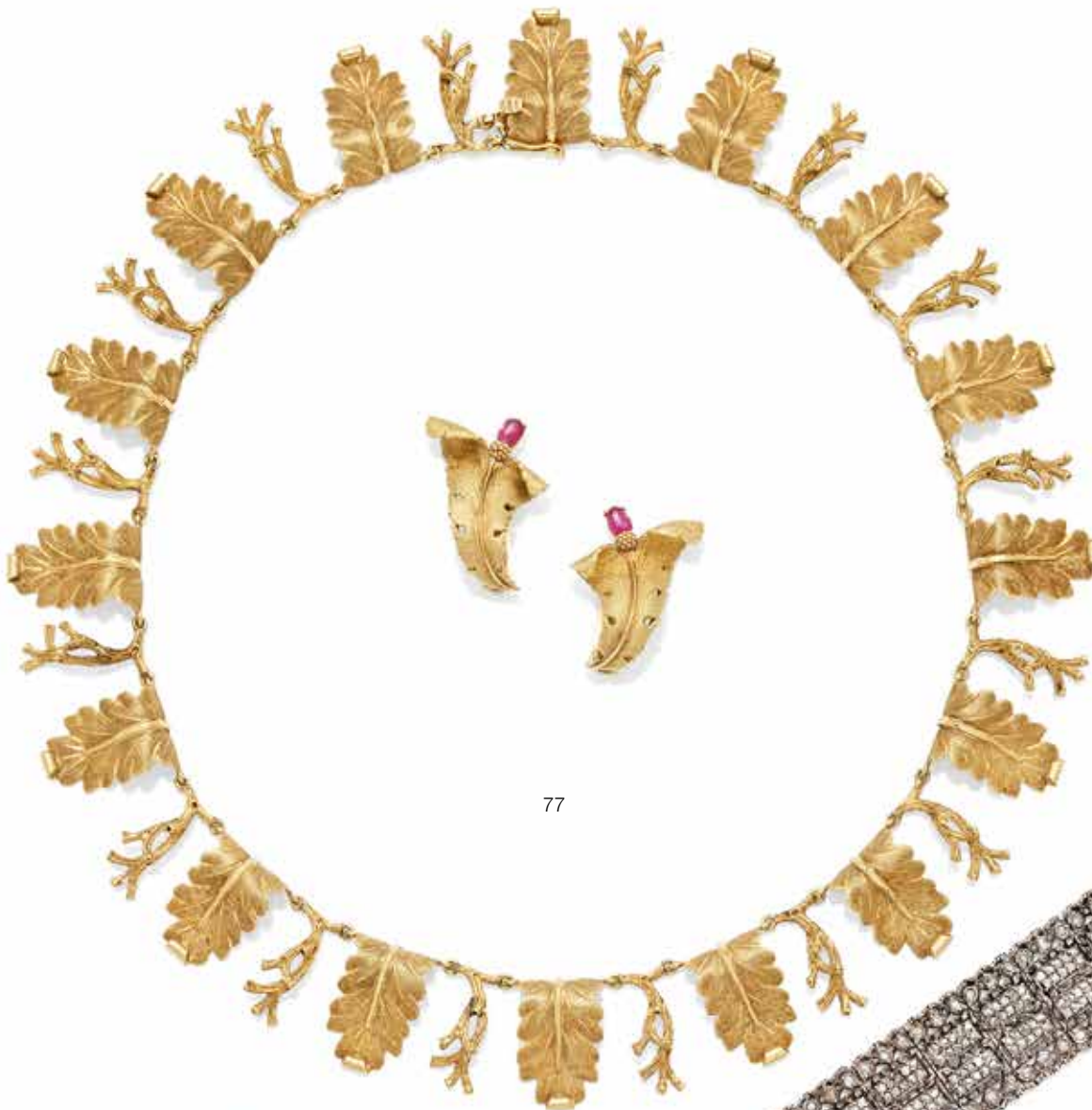
76

A FIRE OPAL DOME RING

mounted in 14k gold; size: 5

\$1,000 - 1,500

To be sold without reserve



77



78



79

77

A GOLD NECKLACE WITH A PAIR OF RUBY EAR CLIPS, BUCCELLATI, ITALIAN

mounted in 18k gold; gross weight approximately: 56 grams; length: 16in., ear clips dimensions: 1 1/4 x 3/4in.; necklace signed Federico Buccellati with Italian assay marks; ear clips signed M. Buccellati

\$3,000 - 5,000

78

A DIAMOND PENDANT/BROOCH, MARIO BUCCELLATI, ITALIAN

set in silver-topped gold; estimated total diamond weight: 3.50cts; dimension: 1 7/8 x 1 1/2in.; signed M. Buccellati

\$3,000 - 5,000

79

A DIAMOND BRACELET, MARIO BUCCELLATI, ITALIAN, CIRCA 1935

mounted in silver-topped gold; gross weight approximately: 33 grams; length: 7in.; signed M. Buccellati, Milano and Roma

\$15,000 - 20,000

Accompanied by a letter or authenticity from Buccellati





80



81



82



83

**80
A TURQUOISE AND PEARL PENDANT
NECKLACE**

*mounted in 14k gold; gross weight
approximately: 76 grams; length: 15 1/4in.*

\$2,500 - 3,500

**81
A LATE 19TH CENTURY SAPPHIRE
PENDANT/BROOCH, CIRCA 1880**

*centering a round brilliant step-cut Light
Violetish Blue sapphire approximately: 7.90
x 8.00 x 5.35mm; mounted in 14k gold;
dimensions: 1 x 1 1/4in.*

\$2,000 - 3,000

Accompanied by GIA report #2151933289,
dated March 05, 2014, stating the sapphire
as: Natural Light Violetish Blue, no indication
of heat enhancement.

**82
A DIAMOND AND PEARL PENDANT/
BROOCH**

*mounted in platinum-topped gold; estimated
total diamond weight: 2.80cts; diameter:
1 1/4in.*

\$1,000 - 1,500

PROPERTY FROM A NEW YORK ESTATE

**83
A TURN OF THE CENTURY PEARL AND
DIAMOND PIN, CIRCA 1900**

*pearls approximately: 3.8 to 6.5mm;
mounted in platinum and silver; estimated
total diamond weight: 1.70cts; dimensions:
1 3/4 x 1 1/4in.*

\$5,000 - 7,000



84



85

86



87

84
A PAIR OF AMETHYST EAR PENDANTS WITH AN AMETHYST BRACELET
mounted in 18k gold; bracelet length: 7in.; earring length: 1 1/4in.

\$1,500 - 2,000
To be sold without reserve

85^Y
A LATE 19TH CENTURY CORAL BRACELET, CIRCA 1865
gold filled clasp; length: 7 1/4in.

\$2,000 - 3,000

86
AN ART DECO DIAMOND LINE BRACELET, CIRCA 1930
mounted in platinum; estimated total diamond weight: 7.50cts; length: 7in.

\$5,000 - 7,000

87
A DIAMOND RING
centering an old European-cut diamond approximately: 1.70cts; mounted in platinum; size: 4 3/4

\$2,500 - 3,500



88



89

90



91



88

A DIAMOND BROOCH

mounted in platinum; estimated total diamond weight: 7.50cts; gross weight approximately: 26 grams; dimensions: 3 1/16 x 2 1/4in.

\$3,000 - 5,000

PROPERTY FROM A NEW YORK ESTATE

89

AN ART DECO DIAMOND WRISTWATCH, CIRCA 1920

mechanical movement; dial signed Ullmann, Geneve; estimated total diamond weight: 1.40cts; width: 10mm.; length: 6 1/8in.

\$2,500 - 3,500

90

A DIAMOND AND SAPPHIRE BRACELET

mounted in platinum; estimated total diamond weight: 5.90cts; gross weight approximately: 53 grams; length: 7 1/4in.

\$5,000 - 7,000

91

AN ART DECO DIAMOND AND SAPPHIRE CLIP WITH A DIAMOND DOUBLE-CLIP BROOCH, CIRCA 1930

mounted in platinum; estimated total diamond weight: 7.05cts; gross weight approximately: 30 grams; dimensions: 2 1/4 x 7/8in. and 2 x 1 1/8in.

\$3,000 - 5,000



92

92

A PAIR OF RUBY AND DIAMOND EARRINGS, TIFFANY & CO.

mounted in palladium; estimated total diamond weight: 3.00cts; length: 1 1/8in.; signed Tiffany & Co.

\$3,000 - 5,000

To be sold without reserve

93

AN ART DECO DIAMOND AND RUBY DOUBLE-CLIP BROOCH, CIRCA 1935

mounted in platinum; estimated total diamond weight: 11.20cts; gross weight approximately: 51 grams; dimensions: 3 3/4 x 1 3/4in.

\$4,000 - 6,000

94

A DIAMOND, SAPPHIRE AND SYNTHETIC SAPPHIRE BRACELET

mounted in platinum; with later added 14k white gold bracelet; estimated total diamond weight: 6.25cts; gross weight approximately: 31 grams; length: 6 1/2in.

\$3,500 - 4,500

95

A DIAMOND AND SYNTHETIC SAPPHIRE BRACELET

mounted in platinum; with later added white gold adapted clasp; estimated total diamond weight: 5.00cts; gross weight approximately: 31 grams; length: 6 3/4in.

\$2,500 - 3,500

96

A FRESHWATER PEARL, SAPPHIRE AND DIAMOND RING

centering a natural freshwater pearl measuring: 9.37mm; mounted in platinum; size: 5 3/4

\$3,000 - 5,000

Accompanied by GIA report #6187619961, dated July 31, 2017, stating the pearl as: Natural Freshwater, Unio species, no indications of treatment.



97



98



99



97

A CAT'S-EYE CHRYSOBERYL, DIAMOND AND PLATINUM RING

centering an oval cabochon cat's-eye chrysoberyl approximately: 9.80 x 8.58 x 6.00mm; mounted in platinum; estimated total diamond weight: 1.05cts; size: 7

\$2,000 - 3,000

98

A JADEITE AND DIAMOND BROOCH

mounted in 14k rose gold, platinum and silver: dimensions: 1 3/4 x 1 1/4in.

\$3,000 - 5,000

Accompanied by Mason Kay report #190221-1520, dated February 21,2019, stating: Natural Jadeite Jade-No Dye or Impregnation detected-'A' Jade.

99

TWO JADEITE AND DIAMOND RINGS

mounted in platinum; estimated total diamond weight: 1.15cts; size: 4 and 7 1/4

\$4,000 - 6,000

See Department for Mason Kay reports

100

A CAT'S-EYE CHRYSOBERYL AND DIAMOND RING

centering an oval double cabochon cat's-eye chrysoberyl approximately: 8.59 x 7.31 x 4.66mm; mounted in 14k white gold; size: 7 1/4

\$2,000 - 3,000

PROPERTY FROM THE FAMILY OF FREDERICK AND MAY KNIGHT RINDGE, MALIBU RANCH, CALIFORNIA

101

A PEARL CHAIN WITH LORGNETTE

pearls approximately: 3.8 to 4.5mm; chain platinum; lorgnette 14k white gold; length: chain 55in.; lorgnette: 2 3/4in.

\$2,000 - 3,000

To be sold without reserve

102

AN ART DECO JADEITE, EMERALD, DIAMOND AND PEARL NECKLACE, CIRCA 1930

mounted in platinum; length: 15in.

\$3,000 - 5,000

See Department for Mason Kay report

103

A CULTURED PEARL AND DIAMOND NECKLACE

pearls approximately: 7.9 to 9.1mm; centering an old European-cut diamond approximately: 1.00ct; mounted in platinum; length: 25in.

\$2,000 - 3,000

To be sold without reserve

104

A DIAMOND CLIP, FRENCH, CIRCA 1950

mounted in platinum; estimated total diamond weight: 5.10cts; dimensions: 2 1/2 x 2in.; with French assay marks

\$2,000 - 3,000

105

A CAT'S-EYE CHRYSOBERYL AND DIAMOND RING

mounted in 18k white gold; size: 8 1/4

\$3,000 - 5,000



100



101

102

103

104



105



106



107



108



109

106

AN EMERALD AND DIAMOND RING

centering a cut-cornered square step-cut emerald approximately: 10.04 x 9.99 x 7.46mm; mounted in 14k gold; size: 5

\$2,500 - 3,500

To be sold without reserve

107

AN EMERALD AND DIAMOND BRACELET

mounted in 14k gold; estimated total diamond weight: 11.00cts; gross weight approximately: 29 grams; length: 7in.

\$5,000 - 7,000

To be sold without reserve

108

A JADEITE AND DIAMOND BRACELET

mounted in 14k gold; gross weight approximately: 59 grams; length: 7 1/8in.

\$2,000 - 3,000

Accompanied by Mason Kay report #190131-5957, dated January 31, 2019, stating: Natural Jadeite Jade - No Dye or Impregnation detected - 'A' Jade.

PROPERTY FROM THE ESTATE OF A LOS ANGELES LADY

109

A JADEITE AND DIAMOND HINGED BANGLE

mounted in 18k gold; estimated total diamond weight: 5.20cts; gross weight approximately: 36 grams; diameter: 2 1/2in.

\$1,500 - 2,000

To be sold without reserve

Accompanied by Mason Kay report #190220-3653, dated February 20, 2019, stating: Natural Jadeite Jade-No Dye or polymer detected-'A'Jade.



110



112



111



113

110

A PAIR OF CULTURED PEARL AND DIAMOND EAR CLIPS WITH A PAIR OF CITRINE EAR CLIPS

mounted in 18k gold; diameters: 1 1/8in. and 1in.; one pair signed Schlumberger Studios for Tiffany & Co., one pair signed Chanel, no 12C108

\$3,000 - 5,000

PROPERTY FROM THE MAURICE AND JOANNA SULLIVAN FAMILY FOUNDATION

111

A JADEITE AND DIAMOND BROOCH

centering a rectangular tablet jadeite approximately: 15.60 x 23.65mm; mounted in 18k gold; dimensions: 1 1/4 x 2 1/4in.

\$1,000 - 1,500

Accompanied by Mason Kay report #180517-1984, dated May 17, 2018, stating: Natural Jadeite Jade-No Dye or Polymer detected-'A' Jade.

112

AN EMERALD AND DIAMOND RING

centering an oval brilliant-cut emerald approximately: 9.61 x 7.37 x 5.33mm; mounted in 14k gold; estimated total, with diamond weight: 2.00cts; size: 4 1/2, hinged shank

\$3,500 - 5,000

113

A DIAMOND AND ENAMEL BROOCH

mounted in 18k bi-color gold; estimated total diamond weight: 1.50cts; gross weight approximately: 25 grams; dimensions: 3 1/2 x 1 3/4in.

\$1,000 - 1,500



PROPERTY FROM A HONOLULU COLLECTOR

114^Y

A PAIR OF EMERALD, SAPPHIRE AND DIAMOND EAR CLIPS WITH A PAIR OF MOTHER-OF-PEARL AND DIAMOND EAR CLIPS

mounted in 18k bi-color gold; estimated total diamond weight: 4.30cts; lengths: 7/8in. and 1in.

\$3,500 - 4,500

**115
A GOLD BRACELET, TIFFANY AND CO., GERMANY**

18k gold; weighing approximately: 64 grams; length: 7 3/4in.; signed Tiffany & Co., Germany

\$3,000 - 5,000

PROPERTY FROM A HONOLULU COLLECTOR

116

A COLLECTION OF DIAMOND, ENAMEL AND GEM-SET BROOCHES

mounted in 14k bi-color gold and 18k gold; gross weight approximately: 39 grams; lengths: 1in., 1 1/4in., 1 1/8in. and 3in.; duck brooch signed EW & Co., for E Wolfe & Co., London 1991; cat and mouse brooch signed G & Co., for Garrard, London 1991

\$3,000 - 5,000



117

118

119

120

121

117
AN ENAMEL AND DIAMOND BRACELET, ITALIAN

mounted in 18k bi-color gold; estimated total diamond weight: 1.00ct; gross weight approximately: 74 grams; length: 7in.; signed Italy, with maker's mark

\$3,000 - 5,000

118
AN EMERALD AND DIAMOND RING

centering a cut-cornered square step-cut emerald approximately: 9.64 x 9.15 x 7.35mm; mounted in 18k bi-color gold; size: 3

\$4,000 - 6,000

119
AN EMERALD RING AND EAR CLIP SET, CARTIER, 1995

mounted in 18k gold; ear clips length: 5/8in.; ring size: 7; signed Cartier, no. D43704 and no. 46253; with signed pouch

\$1,200 - 1,800

120
A SAPPHIRE AND DIAMOND RING, LONDON, 1990

centering an oval brilliant-cut sapphire approximately: 6.51 x 4.87 x 3.56mm; mounted in 18k bi-color gold; estimated total diamond weight: 1.00ct; size: 8; with English hallmarks

\$2,000 - 3,000

121
A SAPPHIRE AND DIAMOND CLIP, ITALIAN

mounted in 18k gold; gross weight approximately: 29 grams; dimensions: 1 3/4 x 2 1/4in.; signed Italy

\$1,000 - 1,500



122



123



124



125

122
A RUBY, DIAMOND AND 18K GOLD RING
centering an oval mixed-cut ruby weighing:
3.64cts; *estimated total diamond weight:*
2.75cts; size: 7

\$6,000 - 8,000

Accompanied by AGL report #1078407,
dated September 20, 2016, stating the
ruby as: Natural, Burmese origin, heat
enhancement.

123
**A PAIR OF RUBY AND DIAMOND EAR
PENDANTS**
*mounted in 14k gold; estimated total
diamond weight: 1.25cts; length: 1 1/2in.*

\$2,000 - 3,000
To be sold without reserve

124
**A RUBY, SAPPHIRE, EMERALD AND
DIAMOND SUITE**
*mounted in 18k bi-color gold; estimated total
diamond weight: 5.00cts; bangle diameter:
2 1/2in.; ear clip dimensions: 1 x 1in.; ring
size: 6 1/2*

\$3,000 - 5,000
To be sold without reserve

125
**A CULTURED PEARL BRACELET,
PORTUGUESE**
*pearls approximately: 8.0 to 8.3mm;
mounted in 18k gold; gross weight
approximately: 71 grams; length: 7 1/8in.;
with Portuguese assay marks*

\$2,500 - 3,500



126



127



128

126
A DIAMOND AND GEM-SET CLIP
mounted in 18k bi-color gold; estimated total diamond weight: 2.65cts; gross weight approximately: 47 grams; dimensions: 2 3/4 x 3in.

\$2,000 - 3,000

127
A CULTURED PEARL, DIAMOND AND GEM-SET NECKLACE
pearls approximately: 12.2 to 14.4mm; mounted in 18k gold; estimated total diamond weight: 2.75cts; length: 20in.

\$3,000 - 5,000

128
A SET OF THREE DIAMOND AND GEM-SET RINGS, VAN CLEEF & ARPELS, FRENCH
mounted in 18k gold; size: 4 1/2 and 5 3/4; signed VCA, no. 1C628, no. 109164 and no. 115597; with French assay and maker's marks

\$5,500 - 6,500



129



130



131



129

A PAIR OF RUBY AND DIAMOND EAR CLIPS, DENISE ROBERGÉ

mounted in 18k gold; gross weight approximately: 43 grams; dimensions: 1 1/2 x 1 1/4in.; signed Robergé

\$2,000 - 3,000

130

A COLORED FRESHWATER PEARL, DIAMOND AND GEM-SET BRACELET

mounted in 18k gold; length: 8in. (grey pearls untested for origin of color)

\$2,000 - 3,000

131

A PAIR OF GOLD 'WAVE' BANGLES AND RING SET, ELSA PERETTI FOR TIFFANY & CO.

18k gold; gross weight approximately: 35 grams; bangle diameters: 2 5/8in.; ring size: 7 3/4; signed Tiffany & Co. Peretti

\$2,000 - 3,000

To be sold without reserve



132



133



134

132
A DIAMOND DOME RING
centering a round brilliant-cut diamond
approximately: 1.05cts; *mounted in 18k gold;*
estimated total remaining diamond weight:
1.60cts; size: 7 1/2

\$3,000 - 5,000

133
A YELLOW BERYL AND DIAMOND RING, NERSO
centering a cut-cornered rectangular step-
cut yellow beryl approximately: 20.98 x 18.46
x 12.55mm; *mounted in 18k gold; estimated*
total diamond weight: 1.75cts; size: 7; signed
Nerso

\$2,000 - 3,000

134
A PINK TOURMALINE AND DIAMOND NECKLACE AND EAR CLIP SET
mounted in 18k gold; estimated total
diamond weight: 10.50cts; necklace length:
16 3/4in.; ear clip length: 2in.

\$6,000 - 8,000



135



136



137



138



139

135
A BROWN TOURMALINE AND DIAMOND NECKLACE

mounted in 18k gold; length: 17in.; no. 1916018

\$2,000 - 3,000

136
AN ORANGE TOPAZ AND DIAMOND RING

centering an oval brilliant mixed-cut orange topaz approximately: 14.34 x 10.21 x 5.83mm; mounted in 18k gold; estimated total diamond weight: 1.00ct; size: 6 1/4 with sizing beads

\$2,500 - 3,500

137
A KUNZITE AND DIAMOND RING

centering an oval mixed-cut kunzite approximately: 18.80 x 13.71 x 9.41mm; mounted in 18k gold; estimated total diamond weight: 1.75cts; size: 7 1/4

\$2,000 - 3,000

138
A DIAMOND AND RUBY RING

mounted in 18k gold; estimated total diamond weight: 2.15cts; size: 6 1/2

\$2,000 - 3,000

139
A DIAMOND FLEXIBLE BRACELET

mounted in 18k bi-color gold; estimated total diamond weight: 1.35cts; gross weight approximately: 82 grams; diameter: 2 1/4in.

\$5,500 - 6,500



140



141



142



143

140
A CULTURED PEARL AND DIAMOND RING

pearl approximately: 13.6mm; *mounted 18k gold; estimated total diamond weight: 2.00cts; size: 6 3/4*

\$2,000 - 4,000

PROPERTY FROM THE ESTATE OF A LOS ANGELES LADY

141
A DIAMOND INTEGRAL BRACELET WRISTWATCH, CHOPARD

case, dial and movement signed; bracelet unsigned; *case no. S10-2700 55531; mounted in 18k gold; gross weight approximately: 49 grams; case width: 28mm; length: 7 1/4in.*

\$1,800 - 2,500
To be sold without reserve

142
A CULTURED PEARL 'SUNFLOWER' BRACELET WRISTWATCH, ASPREY

pearls approximately: 6.0 to 6.5mm; *mounted in 18k gold; serial 000044; 7J quartz movement; case width: 32mm; length: 7 1/4in., signed on case*

\$1,500 - 2,000

143
A DIAMOND INTEGRAL BRACELET 'ORCHID' WRISTWATCH, ROLEX

mechanical movement; *case, dial and movement signed; case numbered no. 2675 1; mounted in 18k gold; gross weight approximately: 53 grams; estimated total diamond weight: 1.00ct, case width: 26mm; length: 6 1/2in.*

\$2,000 - 3,000
To be sold without reserve



144



145



146



147

144

A DIAMOND NECKLACE

mounted in 18k gold; estimated total diamond weight: 9.65cts; length: 17in.

\$2,500 - 3,500

145

A PAIR OF TURQUOISE AND DIAMOND EAR CLIPS, DAVID WEBB, CIRCA 1960

mounted in platinum and 18k gold; estimated total diamond weight: 2.00cts; signed Webb

\$5,000 - 7,000

146

A PAIR OF DIAMOND EAR CLIPS, CARTIER

mounted in 18k gold; diameter: 1 1/4in.; signed Cartier, no. 300765

\$2,000 - 3,000

147

A SAPPHIRE AND DIAMOND RING, OSCAR HEYMAN AND BROTHERS

mounted in 18k gold; size: 6 1/4; with maker's mark, no. 23981

\$2,000 - 3,000





148

149

150



151



152



153

148

AN AMETHYST AND DIAMOND BEAD PENDANT NECKLACE AND EAR CLIP SET

amethyst beads approximately: 10.0 to 10.2mm; mounted in 18k bi-color gold; necklace length: 32in.; ear clip length: 1 3/4in.

\$2,000 - 3,000

To be sold without reserve

149

A PAIR OF PERIDOT EAR CLIPS, ANDREW CLUNN

mounted in 18k gold; dimensions: 1 1/2 x 1 3/4in.; signed A.Clunn

\$2,000 - 3,000

150

A BLACK ONYX BANGLE AND EAR CLIP SET WITH A PAIR OF BLACK JADE CUFFLINKS, TIFFANY & CO.

mounted in 18k gold; gross weight approximately: 106 grams; bangle diameter: 2 1/4in.; ear clip length: 1in.; cufflink length: 1 1/16in.; bangle and ear clips are Angela Cummings for Tiffany & Co., signed T&Co.; cufflinks signed Tiffany & Co., Hong Kong

\$7,000 - 10,000

151

A PERIDOT AND DIAMOND PENDANT

centering a cushion mixed-cut peridot approximately: 23.80 x 23.80 x 16.50mm; mounted in 18k bi-color gold; estimated total diamond weight: 1.15cts; length: 2in.

\$5,000 - 7,000

152

A BLACK ONYX AND DIAMOND HINGED BANGLE

mounted in 18k gold; estimated total diamond weight: 2.00cts; diameter: 2 1/4in.

\$2,500 - 3,500

153

A PAIR OF AMETHYST, PERIDOT, AQUAMARINE AND DIAMOND EAR PENDANTS

mounted in 18k gold; length: 2 3/4in.

\$1,800 - 2,200



154

154
A DIAMOND BAND, BULGARI, ITALIAN
mounted in 18k gold; size: 6 1/4; signed Bulgari

\$2,000 - 3,000

PROPERTY FROM A HONOLULU COLLECTOR

155
TWO CULTURED PEARL AND GOLD BROOCHES
mounted in 18k bi-color gold; dimensions: 1 1/4 x 1 1/4in. and 1 1/2 x 1 1/2in.; elephant signed Henry Dunay, no. A4277; pig stamped TF, London, 1994

\$2,500 - 3,500

155

156^Y
A JADEITE AND CORAL NECKLACE
mounted in 18k gold; length: 17 1/2in.

\$3,000 - 5,000

Accompanied by Mason Kay report #190304-13066, dated March 4, 2019, stating: Natural Jadeite Jade-No Dye or polymer detected-'A'Jade.

156

157
A DIAMOND RING, BULGARI, ITALIAN
mounted in 18k bi-color gold; size: 5 1/2; signed Bulgari

\$2,000 - 3,000

157



157A

**A MULTI-GEMSTONE AND ENAMEL
FLOWER STUDY**

mounted in 18k gold; height: 5 1/2in.

\$8,000 - 10,000



160

159



158



PROPERTY FROM A NEW YORK ESTATE

158

A RUBY AND EMERALD TURTLE CLIP
mounted in 14k gold; dimensions: 1 3/4 x 1 1/4in.

\$2,000 - 3,000

159

A JADEITE AND DIAMOND PENDANT NECKLACE

pendant mounted in 18k bi-color gold; 14k gold chain; estimated total diamond weight: 2.00cts; chain length: 18in.; pendant dimensions: 5 1/2 x 2in.

\$4,000 - 6,000

Accompanied by Mason Kay report #180803-11889, dated August 3, 2018, stating: Natural Jadeite Jade-No Dye or Polymer detected-'A'Jade.

160

A PAIR OF JADEITE EAR CLIPS

mounted in 18k gold; dimensions: 1 3/4 x 2in.

\$2,000 - 3,000

Accompanied by Mason Kay report #190221-2196, dated February 21, 2019, stating: Natural Jadeite Jade-No Dye or Impregnation detected-'A'Jade.



161



162

163



164

161

A COLORED FRESHWATER PEARL, DIAMOND AND RUBY HINGED BANGLE

mounted in 18k gold; estimated total diamond weight: 2.00cts; diameter: 2 1/2in. (pink pearls untested for origin of color)

\$3,500 - 4,500

162

A DIAMOND AND SAPPHIRE BRACELET, LA TRIOMPHE

mounted in 18k bi-color gold; estimated total diamond weight: 1.00ct; gross weight approximately: 43 grams; length: 7 1/2in.; with maker's mark

\$2,500 - 3,500

PROPERTY FROM A NEW YORK ESTATE

163

A GOLD LINK BRACELET

18k gold; weighing approximately: 46 grams; length: 7in.

\$1,500 - 2,000

To be sold without reserve

PROPERTY FROM THE ESTATE OF A LOS ANGELES LADY

164

A JADEITE AND DIAMOND CLIP

mounted in 14k bi-color gold; dimensions: 2 1/2 x 2in.

\$1,500 - 2,000

To be sold without reserve

Accompanied by Mason Kay report #10220-3895, dated January 20, 2019, stating: Natural Jadeite Jade-No Dye or Polymer detected-'A' Jade.



165

165



167



168



169

170

165

A GOLD SUITE

18k gold; gross weight approximately: 184 grams; necklace length: 18in.; bracelet length: 7 1/2in.; ear clip length: 1 7/8in.

\$3,000 - 5,000

166
No lot

167

A DIAMOND INTEGRAL BRACELET WRISTWATCH, KUTCHINSKY FOR DELANEAU

quartz movement; case signed Kutchinsky, dial signed DeLaneau, mounted in 18k gold; gross weight approximately: 86 grams; diameter: 37mm; length: 6 3/4in.

\$3,000 - 5,000

PROPERTY OF A LADY

168

A DIAMOND RING

centering a round brilliant-cut diamond approximately: 2.80cts; mounted in 18k gold; estimated total remaining diamond weight: 1.35cts; size: 5 1/4 with sizing beads

\$6,500 - 7,500

PROPERTY FROM VARIOUS OWNERS

169

A DIAMOND RING

centering a round brilliant-cut diamond approximately: 1.00ct; mounted in 18k gold; estimated total remaining diamond weight: 1.20cts; size: 7 3/4

\$2,500 - 3,500

170

A DIAMOND CHAIN, POMELLATO

converts into two bracelets; 18k bi-color gold; estimated total diamond weight: 1.40cts; gross weight approximately: 139 grams; necklace length: 15in. or two bracelet lengths: 7 1/2in. each; signed Pomellato

\$6,000 - 8,000



171



173



172



174



175

171

A PAIR OF AMETHYST, CITRINE AND DIAMOND EAR CLIPS

mounted in 18k white gold; estimated total diamond weight: 2.10cts; dimensions: 3/4 x 3/4in.

\$4,000 - 6,000

172

A COLORED DIAMOND HINGED BANGLE

mounted in rhodium plated 14k white gold; estimated total diamond weight: 13.35cts; diameter: 2 3/8in. (orange and brown diamonds untested for origin of color)

\$3,500 - 5,000

To be sold without reserve

173

A DIAMOND RING

mounted in rhodium plated 18k white gold; estimated total diamond weight: 9.55cts; size: 6

\$6,000 - 8,000

174

A VIOLET SPINEL AND DIAMOND RING

centering an oval brilliant mixed-cut violet spinel approximately: 12.71 x 9.91 x 6.52mm; mounted in 18k white gold; estimated total diamond weight: 2.20cts; size: 5 1/2

\$2,500 - 3,500

To be sold without reserve

175

A PAIR OF YELLOW SAPPHIRE AND DIAMOND EAR PENDANTS

mounted in rhodium plated 14k white gold; estimated total diamond weight: 1.25cts; length: 1 1/2in.

\$2,000 - 3,000

To be sold without reserve



177



176

176
A PAIR OF DIAMOND EAR PENDANTS
*mounted in 14k gold and platinum;
 estimated total diamond weight: 5.00cts;
 length: 3/4in.*

\$12,000 - 18,000



178

178
A DIAMOND RING, TIFFANY & CO.
*centering a round brilliant-cut diamond
 weighing: 1.08cts; mounted in platinum;
 size: 4 3/4; signed Tiffany & Co., no
 29970122*

\$5,000 - 7,000

Accompanied by GIA report #1206078455,
 dated February 25, 2019, stating the
 diamond as: F color, VVS2 clarity.

177
**A COLORED CULTURED PEARL AND
 DIAMOND SUITE**
*pearls approximately: 9.9 to 13.6mm;
 mounted in 14k and 18k white gold;
 necklace length: 18in.; earring length:
 1 3/4in.; ring size: 4 3/4 (golden pearls
 untested for origin of color)*

\$5,000 - 7,000



179

**179
A PAIR OF TANZANITE, ENAMEL AND
DIAMOND EAR PENDANTS**

mounted in 18k gold; length: 2in.

\$2,500 - 3,500



180

**180
A COLORED SAPPHIRE BEAD AND
DIAMOND NECKLACE**

*ten strands of faceted multi-color sapphire
beads; clasp 18k gold; length: 16 1/2in.*

\$2,000 - 3,000
To be sold without reserve



181

**181
A PAIR OF SAPPHIRE AND DIAMOND
EAR PENDANTS**

*mounted in 14k white gold; estimated total
diamond weight: 1.50cts; length: 2 5/8in.*

\$2,000 - 3,000
To be sold without reserve



182

**182
A PINK SAPPHIRE, ORANGE SAPPHIRE
AND COLORED DIAMOND CLIP/
PENDANT**

*mounted in 18k bi-color gold; dimensions:
2 x 1 3/4in. (brown diamonds untested for
origin of color)*

\$2,000 - 3,000



183

**183
AN OPAL BEAD AND DIAMOND
NECKLACE AND EAR PENDANT SET**

*opals approximately: 7.1 to 13.0mm;
mounted in 14k bi-color gold; necklace
length: 15 3/4in.; earring length: 2 7/8in.*

**\$2,000 - 3,000
To be sold without reserve**



184

**184
A LAVENDER JADEITE, AMETHYST AND
DIAMOND RING**

*centering an oval cabochon lavender jadeite
approximately: 17.52 x 14.02 x 6.50mm;
mounted in 18k rose gold; estimated total
diamond weight: 1.05cts; size: 6 3/4*

**\$2,000 - 3,000
To be sold without reserve**

*Accompanied by Mason Kay report #190304-
1851, dated March 4, 2019, stating: Natural
Jadeite Jade-No Dye or Polymer detected-
'A'Jade.*



185



187



186



188



189

185

A DIAMOND PENDANT NECKLACE

mounted in 14k white gold; estimated total diamond weight: 1.50cts; length: 16in.

\$1,200 - 1,800

186

A COLORED DIAMOND AND DIAMOND RING

mounted in 14k gold and rhodium plated 18k gold; estimated total diamond weight: 1.70cts; size: 6 (yellow, pink, brown and blue diamonds untested for origin of color)

\$2,000 - 3,000

PROPERTY OF A LADY

187

A DIAMOND PENDANT

centering a round brilliant-cut diamond weighing: 1.66cts; mounted in platinum; dimensions: 1 1/4 x 7/8in.

\$7,000 - 9,000

Accompanied by GIA report #2151374099, dated February 14, 2019, stating the diamond as: G color, VVS2 clarity.

188

A PAIR OF CULTURED PEARL AND DIAMOND RING

pearls approximately: 11.5 to 11.6mm; mounted in rhodium plated 18k white gold; estimated total diamond weight: 3.30cts; earring length: 1 3/8in.; ring size: 5 3/4

\$2,500 - 3,500

189

AN AQUAMARINE AND DIAMOND RING

centering a cut-cornered rectangular step-cut aquamarine approximately: 17.02 x 15.20mm; mounted in rhodium plated 18k gold; size: 5 3/4

\$2,000 - 3,000



190



191



192



193



194



195

190
A RETRO DIAMOND CLIP, FRENCH, CIRCA 1950
mounted in 18k white gold and platinum; estimated total diamond weight: 2.70cts; dimensions: 3 1/4 x 1in.; with French assay and maker's marks
\$1,500 - 2,000

PROPERTY FROM A NEW YORK ESTATE
 191
A DIAMOND PENDANT NECKLACE
centering an old European-cut diamond approximately: 2.90cts; mounted in platinum; 14k white gold chain; pendant length: 7/8in.; chain length: 18in.
\$6,000 - 8,000

192
AN ART DECO DIAMOND BRACELET, CIRCA 1930
mounted in platinum; estimated total diamond weight: 4.20cts; length: 7 1/2in.
\$2,000 - 3,000
To be sold without reserve

193
A RED SPINEL AND DIAMOND PENDANT
centering a pear brilliant-cut red spinel approximately: 12.53 x 8.93 x 5.73mm; mounted in 18k gold; estimated total diamond weight: 2.10cts; dimensions: 1 1/2 x 7/8in.
\$2,000 - 3,000
To be sold without reserve

194
A DIAMOND AND RUBY ETERNITY BAND
mounted in platinum; estimated total diamond weight: 2.75cts; size: 7 1/4
\$2,000 - 3,000

195
A RUBY AND DIAMOND RING
centering a round brilliant step-cut ruby weighing: 1.31cts; mounted in 14k gold and platinum; size: 6 1/2
\$3,000 - 5,000
 Accompanied by GIA report #5191582073, dated August 16, 2018, stating the ruby as: Natural, Burmese origin, no indications of heat enhancement.



196



197



198



199

196

A SAPPHIRE AND DIAMOND RING

centering an oval brilliant step-cut sapphire weighing: 3.32cts; *estimated total diamond weight: 2.75cts; size: 7*

\$2,500 - 3,500

Accompanied by GIA report #2201027757, dated February 13, 2019, stating the sapphire as: Natural, Sri Lankan origin, heat enhancement.

197

A DIAMOND RING

mounted in 18k white gold; estimated total diamond weight: 2.30cts; size: 6 3/4

\$4,000 - 6,000

198

A SAPPHIRE AND DIAMOND RING

centering a cut-cornered rectangular mixed-cut sapphire approximately: 18.78 x 13.14 x 9.27mm; *mounted in platinum; size: 6 1/2*

\$6,000 - 10,000

199

A DIAMOND BRACELET

mounted in 18k white gold; estimated total diamond weight: 11.15cts; length: 7 1/2in.

\$5,500 - 6,500

200

A PAIR OF AQUAMARINE, SAPPHIRE AND DIAMOND EAR PENDANTS

mounted in rhodium plated 18k gold; length: 3in.

\$2,500 - 3,500

201

A PAIR OF SAPPHIRE AND DIAMOND STUD EARRINGS

centering two cushion modified brilliant step-cut sapphires weighing: 4.82cts and 5.87cts; *mounted in 18k white gold; estimated total diamond weight: 1.20cts; diameter: 3/4in.*

\$3,000 - 5,000

Accompanied by GIA report #6197589314, dated August 21, 2018, stating the sapphire as: Natural, Sri Lankan origin, no indications of heat enhancement.

Accompanied by GIA report #5191589318, dated August 21, 2018, stating the sapphire as: Natural, Sri Lankan origin, no indications of heat enhancement.

202

A DIAMOND LONG CHAIN

mounted in 18k white gold; estimated total 9.35cts; gross weight approximately: 46 grams; length: 36in.

\$10,000 - 12,000

203

A SAPPHIRE AND DIAMOND RING

centering an oval brilliant step-cut sapphire approximately: 19.71 x 15.40 x 10.33mm; *mounted in platinum; estimated total diamond weight: 3.45cts; size: 6 1/4*

\$15,000 - 20,000

Accompanied by GIA report #1192388928, dated May 31, 2018, stating the sapphire as: Natural, Sri Lankan origin, with heat enhancement.

204

A PAIR OF DIAMOND EAR PENDANTS

centering two round brilliant-cut diamonds approximately: 1.00ct and 1.10cts; *mounted in rhodium plated 18k white gold; estimated total remaining diamond weight: 6.35cts; length: 3 1/4in.*

\$4,000 - 6,000



200



202



201



203



204



205



206



208



207

205

A PAIR OF DIAMOND EAR PENDANTS
mounted in 18k white gold; estimated total diamond weight: 5.00cts; length: 2 3/4in.

\$2,500 - 3,500

206

TWO SPINEL AND DIAMOND BRACELETS

mounted in 14k white gold; estimated total diamond weight 2.70cts; lengths: 6in. and 7in.

\$2,000 - 3,000

To be sold without reserve

207

A PAIR OF PINK TOURMALINE AND DIAMOND EAR PENDANTS

mounted in 14k white gold; estimated total diamond weight: 1.64cts; length: 1 3/4in.

\$4,000 - 6,000

208

A KUNZITE, SAPPHIRE AND DIAMOND RING

centering a cut-cornered rectangular step-cut kunzite weighing: 28.82cts; mounted in platinum; size: 6 1/2

\$2,000 - 3,000



209



210



211



212



213

209
A PAIR OF SAPPHIRE, GREEN SAPPHIRE AND DIAMOND EAR PENDANTS
mounted in 18k white gold; length: 2in.

\$2,500 - 3,500

210
A DIAMOND RING
mounted in 18K white gold; estimated total diamond weight: 2.50cts; size: 7 1/4

\$4,000 - 6,000

211
A DIAMOND AND GEM-SET BRACELET
mounted in 18k white gold; estimated total diamond weight: 1.60cts; length: 7 1/2in.

\$2,000 - 3,000

212
A FANCY DEEP YELLOW DIAMOND AND DIAMOND RING
pear modified brilliant-cut Fancy Deep Yellow diamond weighing: 1.26cts; pear brilliant-cut diamond weighing: 1.05cts; mounted in rhodium plated 18k white gold; size: 7 1/4

\$10,000 - 15,000

Accompanied by GIA report #6262199897, dated June 30, 2017, stating the diamond as: Natural Fancy Deep Yellow color, SI1 clarity.

Accompanied by GIA report #2171041231, dated February 26, 2015, stating the diamond as: D color, SI1 clarity.

213
A BLUE TOURMALINE AND DIAMOND RING
centering an oval brilliant-cut blue tourmaline weighing: 13.20cts; mounted in 18k white gold; size: 8

\$6,000 - 8,000

Accompanied by GRS report #041004, dated April 2, 2012, stating the tourmaline as: Natural 'Cuprian-Elbaite', Mozambique origin, no indications of heat enhancement.



214



215



216



217



219



218



220



221



222



223

214
A COLORED CULTURED PEARL, CULTURE PEARL AND DIAMOND NECKLACE
 pearls approximately: 11.2 to 15.3mm; 14k white gold clasp; length: 34in. (grey pearls untested for origin of color)

\$6,500 - 9,500

215
A PAIR OF DIAMOND AND CULTURED PEARL EAR PENDANTS
 pearls approximately: 15.0 to 15.1mm; mounted in rhodium plated 18k white gold; length: 1 1/8in.

\$2,000 - 3,000
To be sold without reserve

216
A DIAMOND RING
 centering a marquise brilliant-cut diamond weighing: 3.19cts; mounted in 14k white gold; size: 7 with sizing spring

\$15,000 - 20,000

Accompanied by GIA report #2205077641, dated February 25, 2019, stating the diamond as: D color, SI2 clarity.

217
A PAIR OF BLUE ZIRCON AND DIAMOND EAR PENDANTS
 mounted in rhodium plated 18k white gold; length: 1 3/8in.

\$2,000 - 3,000
To be sold without reserve

PROPERTY FROM A NEW YORK ESTATE

218
A DIAMOND PENDANT/BROOCH
 mounted in 18k white gold; estimated total diamond weight: 2.90cts; diameter: 1 3/4in.

\$2,000 - 3,000

219
A BLUE TOURMALINE, DIAMOND AND COLORED DIAMOND ENHANCER
 mounted in 18k bi-color gold; estimated total diamond weight: 4.35cts; length: 2 3/8in.

\$3,000 - 5,000
To be sold without reserve

220
A TURQUOISE, DIAMOND AND ENAMEL RING
 mounted in rhodium plated 18k white gold; estimated total diamond weight: 4.40cts; size: 7 1/2

\$4,000 - 6,000

221
A DIAMOND RING,
 centering an old European-cut diamond approximately: 1.30cts; mounted in rhodium plated 18k white gold; size: 4 1/2; mount signed Chanel, no. Y50246; with French assay marks

\$2,500 - 3,500

222
A TURQUOISE AND DIAMOND RING
 mounted in 18k blackened gold; estimated total diamond weight: 1.30cts; size: 6 1/2

\$1,800 - 2,200

223
A DIAMOND BRACELET
 mounted in 18k white gold; estimated total diamond weight: 6.20cts; length: 7 1/2in.

\$2,500 - 3,500



224



225



226



227



228



229



230



224^Y

A CORAL BEAD NECKLACE

coral beads approximately: 10.1 to 13.9mm;
14k gold clasp; length: 28in.

\$3,000 - 5,000

To be sold without reserve

PROPERTY FROM A NEW YORK ESTATE

225

**A PAIR OF RUBY ELEPHANT
BROOCHES, CARTIER**

mounted in 14k bi-color gold; dimensions: 1
x 1 3/8in.; signed Cartier

\$1,500 - 2,000

To be sold without reserve

226

A GOLD BRACELET

18k gold; weighing approximately: 66 grams;
length: 7in.

\$2,000 - 3,000

227

**A DIAMOND CLIP, RETAILED BY LAYKIN
& CO., FRENCH, CIRCA 1960**

mounted in 18k bi-color gold; estimated
total diamond weight: 2.30cts; gross weight
approximately: 45 grams; dimensions: 2 x
2 1/2in.; signed Laykin & Co France, with
French assay marks

\$6,000 - 8,000

228^Y

A CORAL AND TURQUOISE BRACELET

mounted in 14k gold; gross weight
approximately: 68 grams; length: 7 1/2in.

\$2,000 - 3,000

**PROPERTY FROM A HONOLULU
COLLECTOR**

229

**A DIAMOND AND SAPPHIRE HIPPO
BROOCH, TIFFANY & CO., GERMAN,
1991**

mounted in 18k bi-color gold; dimensions:
1 7/8 x 1 1/2in.; signed Tiffany & Co.,
Germany, 1991; with signed box

\$2,000 - 3,000

230

**A PAIR OF DIAMOND EAR CLIPS WITH
A GOLD BRACELET, SCHLUMBERGER
FOR TIFFANY & CO.**

ear clips mounted in 18k bi-color gold;
bracelet 18k gold; ear clips length: 1in.;
bracelet length: 7 1/4in.; both signed
Schlumberger, Tiffany & Co.; with signed
pouch

\$2,000 - 4,000



231

233

232

231^Y

A CORAL BEAD NECKLACE WITH CORAL BEAD STUD EARRINGS

coral beads approximately: 8.2 to 10.5mm; necklace length: 18in.

\$1,500 - 2,000

To be sold without reserve

232^Y

A MOTHER-OF-PEARL EAR CLIP AND HINGED BANGLE SET, ANGELA CUMMINGS FOR TIFFANY & CO.

mounted in 18k gold; gross weight approximately: 97 grams; bangle diameter: 2 1/4in.; ear clip length: 1in.; signed Tiffany & Co. with maker's mark

\$7,000 - 10,000

233^Y

A PAIR OF AMETHYST, CORAL AND DIAMOND EAR PENDANTS

mounted in 18k gold; length: 2 1/2in.

\$1,500 - 2,000



234

235

236

237

234

A PAIR OF CARNELIAN EAR CLIPS AND A RING SET, FRENCH

mounted in 18k gold; with silver coin replicas; ear clips dimensions: 1 x 1in.; ring size: 6 1/4; with French assay and maker's marks

\$2,000 - 3,000

235

A GILT STEEL CONCEALED DIAL 'MEDOR' STRAP WRISTWATCH, HERMES

quartz movement; case, dial, and movement signed; case no. 662721; case width: 23mm; length: 8in.

\$1,800 - 2,500

236

A SPESSARTITE GARNET AND DIAMOND RING

centering an oval mixed-cut spessartite garnet approximately: 12.22 x 10.90 x 6.83mm; mounted in 18k gold; size: 6 3/4

\$2,000 - 3,000

To be sold without reserve

237

A DIAMOND, RUBY, EMERALD AND BAROQUE CULTURED PEARL BROOCH

pearl approximately: 13.8mm; mounted in 18k white gold and 22k gold; dimensions: 2 3/8 x 1 1/8in.

\$2,000 - 3,000



238



239



240



241



242

PROPERTY FROM THE ESTATE OF A BEVERLY HILLS LADY

238

A DIAMOND RING

mounted in 18k gold; estimated total diamond weight: 2.95cts; size: 6 3/4

\$2,000 - 3,000

239

A DIAMOND BAND, CARTIER, PARIS, FRENCH

mounted in 18k gold and platinum; size: 4 3/4; signed Cartier, no. 97180; with French assay marks

\$2,500 - 3,500

240

A RUBY AND TURQUOISE CUFF

mounted in 14k gold; gross weight approximately: 48 grams; diameter: 2 1/4in.

\$1,000 - 1,500

To be sold without reserve

PROPERTY FROM ANOTHER OWNER

241

A DIAMOND 'EN TREMBLANT' FLOWER CLIP, FRENCH, CIRCA 1940

mounted in 18k gold; estimated total diamond weight: 1.35cts; gross weight approximately: 29 grams; dimensions: 2 1/2 x 1 1/4in.; signed Made in France with French assay, export and maker's marks

\$2,500 - 3,500

PROPERTY FROM THE ESTATE OF A BEVERLY HILLS LADY

242

A SAPPHIRE AND DIAMOND BRACELET

mounted in 18k gold; estimated total diamond weight: 2.75cts; gross weight approximately: 74 grams; length: 7in.

\$3,500 - 4,500



243



244



246



245



247

243

A RUBY CLIP AND RING

mounted in 18k; clip dimensions: 1 x 3/4in.; ring size: 4

\$2,500 - 3,500

244

TWO SAPPHIRE AND DIAMOND RINGS

mounted in 18k gold; estimated total diamond weight: 2.10cts; sizes: 6 1/2 and 7 1/4

\$3,000 - 5,000

245

A RUBY AND DIAMOND RING

centering a cushion mixed-cut ruby approximately: 17.94 x 8.67 x 4.33mm; mounted in 18k bi-color gold; estimated total diamond weight: 2.00cts; size: 6 1/4

\$5,000 - 8,000

Accompanied by AGL report #8085122, dated February 18, 2016, stating the ruby as: Natural, Mozambique origin, no indication of heat enhancement.

246

A DIAMOND AND ENAMEL DOG CLIP, CARTIER, PARIS

mounted in 18k gold; dimensions: 1 1/2 x 1in.; signed Cartier, Paris; with French assay marks

\$3,000 - 5,000

247

A RUBY AND DIAMOND RING

mounted in 18k bi-color gold; estimated total diamond weight: 2.20cts; size: 6

\$3,000 - 5,000



248



249



250



251



252



248

A PAIR OF EMERALD AND DIAMOND EAR PENDANTS

mounted in 18k white gold; estimated total diamond weight: 2.65cts; length: 1 3/4in.

\$4,000 - 6,000

Accompanied by GIA report #2195520697, dated July 27, 2018, stating the emeralds as: Natural, Zambian origin, evidence of clarity enhancement (F3).

249

A PAIR OF EMERALD AND DIAMOND EAR PENDANTS

mounted in 18k white gold; estimated total diamond weight: 1.40cts; length: 1 1/2in.

\$1,800 - 2,000

To be sold without reserve

250

AN EMERALD AND DIAMOND RING

centering an oval brilliant-cut emerald approximately: 11.52 x 8.80 x 5.46mm; mounted in 18k gold; estimated total diamond weight: 1.20cts; size: 6 3/4

\$2,000 - 3,000

251

AN EMERALD AND DIAMOND RING

centering a square emerald-cut emerald approximately: 11.71 x 11.63 x 5.62mm; mounted in rhodium plated 18k white gold; estimated total diamond weight: 1.00ct; size: 7 1/2

\$6,000 - 8,000

Accompanied by AGL report #1097286, dated December 7, 2018, stating the Emerald as: Colombian origin, minor modern clarity enhancement.

252

AN EMERALD AND DIAMOND EAR CLIP AND RING SET, CHARLES KRYPELL

mounted in rhodium plated 18k white gold; estimated total diamond weight: 1.15cts; ear clip length: 7/8in.; ring size: 6; signed Krypell

\$2,000 - 3,000

To be sold without reserve



253

253
A COLORED DIAMOND SUITE
mounted in 18k gold; estimated total diamond weight: 5.45cts; gross weight approximately: 37 grams; pendant length: 1 1/4in.; chain length: 16in.; ear clip length: 1in.; ring size: 6 1/2 (yellow diamonds untested for origin of color)
\$2,000 - 4,000

256

256
A PAIR OF DIAMOND EAR CLIPS, BULGARI, ITALIAN
mounted in 18K gold; estimated total diamond weight: 6.00cts; dimensions: 1 1/8 x 7/8in.; signed Bulgari; with signed box
\$4,000 - 8,000

254

254
A GOLD LEATHER STRAP WRISTWATCH, BULGARI, ITALIAN
quartz movement; mounted in 18k gold; case width: 29mm; length: 8 1/2in.; signed Bulgari; with signed pouch
\$1,500 - 2,500
To be sold without reserve

255

255
AN EMERALD AND DIAMOND RING
centering an oval cabochon emerald approximately: 12.64 x 9.70mm; mounted in 18k gold; gross weight approximately: 28 grams; size: 7 1/4
\$2,500 - 3,500



257

258

262

259

260

261

257

A RUBY AND DIAMOND RING

centering a cushion brilliant step-cut ruby approximately: 10.24 x 6.20 x 2.45mm; mounted in platinum; estimated total diamond weight: 1.10cts; size: 5 3/4

\$4,500 - 5,500

Accompanied by GIA report #5181999243, dated January 9, 2018, stating the ruby as: Natural, Mozambique origin, no indications of heat enhancement.

258

A PAIR OF RUBY AND DIAMOND EAR STUDS

centering oval brilliant-cut rubies weighing: 2.37cts and 2.58cts; mounted in 18k white gold; dimensions: 5/8 x 1/2in.

\$5,000 - 8,000

Accompanied by GRA report #2010-122185, dated December 20, 2010, stating the ruby as: Natural, Tanzanian origin, no indication of heat enhancement.

Accompanied by GRA report #2010-122182, dated December 20, 2010, stating the ruby as: Natural, Tanzanian origin, no indication of heat enhancement.

259

A FANCY YELLOW DIAMOND, DIAMOND AND RUBY RING

round brilliant-cut Fancy Yellow diamond weighing: 1.00ct; mounted in 18k white gold; estimated total remaining diamond weight: 2.00cts; size: 6 1/4

\$3,000 - 5,000

Accompanied by GIA report #2201062324, dated February 15, 2019, stating the diamond as: Natural Fancy Yellow.

260

A RUBY, PINK SAPPHIRE, DIAMOND AND ENAMEL RING

mounted in 18k white gold; estimated total diamond weight: 2.35cts; size: 7

\$4,000 - 6,000

261

A DIAMOND BRACELET

mounted in 18k white gold; estimated total diamond weight: 3.15cts; length: 7 1/4in.

\$2,000 - 3,000

262

A DIAMOND RING

centering a round brilliant diamond weighing: 1.04cts; mounted in 18k white gold; size: 6 3/4

\$2,000 - 3,000



263



264



266

265

263

A PAIR OF RUBY AND DIAMOND EAR PENDANTS

centering cushion brilliant-cut rubies weighing: 3.22cts and 4.18cts; mounted in 18k white gold; estimated total diamond weight: 11.80cts; length: 1 7/8in.

\$10,000 - 15,000

Accompanied by GRS report #2010-122233, dated December 28, 2010, stating the ruby as: Natural, Tanzanian origin, no indications of heat enhancement.

Accompanied by GRS report #2010-122237, dated December 28, 2010, stating the ruby as: Natural, Tanzanian origin, no indications of heat enhancement.

264

A RUBY AND DIAMOND RING

mounted in 18k white gold; total diamond weight: 1.50cts; size: 6 1/2

\$2,000 - 3,000

265

A DIAMOND NECKLACE

mounted in 18k white gold necklace: 28.65cts; gross weight approximately: 60 grams; length: 16in.

\$15,000 - 20,000

266

A RUBY AND DIAMOND RING

centering a cushion brilliant step-cut ruby approximately: 8.72 x 5.70 x 2.75mm; mounted in 18k white gold; size: 6 1/4

\$2,000 - 3,000

Accompanied by GIA report #2195000209, dated January 10, 2018, stating the ruby as: Natural, Mozambique origin, no indications of heat enhancement.



271

272

273

270

268

269

267



267

A DIAMOND LONG CHAIN

mounted in 18k white gold; estimated total diamond weight: 10.50cts; length: 58in.

\$3,000 - 5,000

268

A DIAMOND CLIP

mounted in rhodium plated 18k gold and platinum; estimated total diamond weight: 2.70cts; gross weight approximately: 36 grams; dimensions: 2 3/4 x 2in.

\$2,000 - 3,000

To be sold without reserve

269

A STAR RUBY AND DIAMOND RING

centering an oval double cabochon star ruby weighing: 36.73cts; mounted in 18k white gold; estimated total diamond weight: 1.80cts; size: 7

\$3,000 - 5,000

Accompanied by GIA report #2185902905, dated December 6, 2017, stating the star ruby as: Natural, no indications of heat enhancement.

270

A COLORED DIAMOND AND DIAMOND RING

centering a heart brilliant-cut brown diamond approximately: 1.50cts; mounted in 18k white gold; size: 7 1/2 (brown diamond untested for origin of color)

\$2,000 - 3,000

271

A RUBY AND DIAMOND RING

centering an oval brilliant step-cut ruby weighing: 3.66cts; mounted in 18k bi-color gold; size: 5 1/2

\$4,000 - 6,000

Accompanied by GIA report #6204009273, dated February 1, 2019, stating the ruby as: Natural, no indications of heat enhancement.

272

A PAIR OF DIAMOND EAR PENDANTS

centering two round brilliant-cut diamonds weighing: 1.00ct and 1.01cts; mounted in 18k white gold; remaining total diamond weight: 1.20cts; length: 1 1/4in.

\$2,500 - 3,500

273

A RED SPINEL AND DIAMOND RING

centering a cushion mixed-cut red spinel approximately: 12.60 x 11.09 x 5.74mm; mounted in 18k white gold; estimated total diamond weight: 2.00cts; size: 5 1/2

\$4,000 - 6,000

To be sold without reserve

274

A RUBY AND DIAMOND RING

centering an oval brilliant step-cut ruby approximately: 9.12 x 7.92 x 4.11mm; mounted in platinum; estimated total diamond weight: 2.15cts; size: 6 1/2

\$4,500 - 5,500

Accompanied by GIA report #1196948375, dated January 7, 2019, stating the ruby as: Natural, Burmese origin, indication of heat enhancement (minor residues).

275

A DIAMOND NECKLACE

mounted in 18k white gold; estimated total diamond weight: 5.00cts; length: 15in.

\$5,500 - 6,500



276



277



278



279



280



276

AN ART DECO DIAMOND CLIP, CARTIER, LONDON, CIRCA 1935

mounted in platinum; estimated total diamond weight: 4.85cts; dimensions: 1 1/16 x 1 7/8in.; signed Cartier, London, Paris, New York, no. 3093

\$3,000 - 5,000

PROPERTY FROM THROUGH THE FAMILY OF FREDERICK RINDGE AND MAY KNIGHT RINDGE, MALIBU RANCH, CALIFORNIA

277

A ROCK CRYSTAL QUARTZ, CARNELIAN AND DIAMOND BROOCH

mounted in platinum; dimensions: 1 1/2 x 3/4in.; unsigned, attributed to Brock & Co., no. 315-98; with original signed box

\$2,000 - 3,000

To be sold without reserve

278

A STAR SAPPHIRE AND DIAMOND RING

centering an oval cabochon star sapphire approximately 14.5 x 12.3 x 11.7mm; mounted in platinum; size: 7 (size 5 with hinged sizer)

\$1,500 - 2,000

PROPERTY FROM A NEW YORK ESTATE

279

A PAIR OF DIAMOND EAR CLIPS, CIRCA 1950

mounted in platinum; estimated total diamond weight: 3.00cts; length: 1 1/4in.

\$2,500 - 3,500

280

TWO ART DECO DIAMOND AND ROCK CRYSTAL QUARTZ BROOCHES, CIRCA 1930

mounted in platinum; estimated total diamond weight of the two: 5.50cts; dimensions: 1 7/8 x 7/8in. and 1 5/8 x 1 1/8in.

\$2,000 - 3,000

To be sold without reserve





281



282



283



284



285



286

281

A PAIR OF SAPPHIRE AND DIAMOND STUD EARRINGS

mounted in 18k white gold; dimensions: 5/8 x 1/2in.

\$2,000 - 3,000

PROPERTY FROM A LOS ANGELES LADY

282

A DIAMOND RING, TIFFANY & CO.

centering a square cushion brilliant-cut diamond weighing: 1.04cts; mounted in platinum; size: 6 3/4; signed Tiffany & Co. no 26227925; with signed box and papers

\$4,000 - 6,000

283

A SAPPHIRE AND DIAMOND ETERNITY BAND

mounted in platinum; size: 5

\$2,000 - 3,000
To be sold without reserve

284

A COLOR CHANGE SAPPHIRE AND DIAMOND RING

centering a triangular brilliant step-cut color change sapphire approximately: 9.20 x 9.80 x 5.22mm; mounted in platinum; estimated total diamond weight: 3.20cts; size: 5 3/4

\$4,500 - 5,500

Accompanied by GIA report #5192657592, dated September 18, 2018, stating the sapphire as: Natural Color Change, Madagascar origin, no indications of heat enhancement.

285

A DIAMOND CROSS PENDANT

mounted in rhodium plated 14k gold; estimated total diamond weight: 1.60cts; dimensions: 3 x 1 3/4in.

\$2,000 - 3,000

PROPERTY FROM A HONOLULU COLLECTOR

286

A DIAMOND AND ENAMEL RING

mounted in platinum; size: 6 3/4

\$1,000 - 1,500



287



288



289



290



291

287

A SAPPHIRE AND DIAMOND NECKLACE, TIFFANY & CO.

centering a round brilliant-cut sapphire approximately: 4.99 x 5.03 x 2.94mm; mounted in platinum; length: 16 1/2in.; signed Tiffany & Co.; with signed box

\$1,500 - 2,000

To be sold without reserve

288

A SAPPHIRE AND DIAMOND RING

mounted in rhodium plated 18k white gold; 1.05cts; size: 7 1/4

\$2,000 - 3,000

289

A DIAMOND BRACELET WITH A WHITE GOLD BRACELET

mounted in 18k white gold; estimated total diamond weight: 3.50cts; lengths: 6 3/4in. and 7 1/2in.; one signed Cartier, no. N72815

\$1,800 - 2,200

290

A COLOR-CHANGE SAPPHIRE AND DIAMOND RING

centering an oval mixed-cut color-change sapphire weighing: 2.41cts; mounted in rhodium plated 14k gold; size: 5 1/4

\$3,500 - 4,500

Accompanied by AGL report #1098196, dated January 21, 2019, stating the sapphire as: Natural, Color-Change, Sri Lankan origin, no evidence of heat enhancement.

291

A DIAMOND BROOCH

centering a round brilliant-cut diamond approximately: 1.00ct; mounted in platinum; estimated total remaining diamond weight: 4.00cts; dimensions: 2 3/8 x 1 1/4in.

\$3,000 - 5,000



292



295



293



294



296

292

AN EMERALD AND DIAMOND RING

centering an octagonal step-cut emerald weighing: 9.83cts; *mounted in 18k bi-color gold; estimated total diamond weight: 1.75cts; size: 7*

\$5,000 - 8,000

Accompanied by GIA report #2193472272, dated July 10, 2018, stating the emerald as: Natural, Colombian origin, evidence of minor clarity enhancement (F1).

293

A DIAMOND AND SAPPHIRE RING, VERA WANG

centering an emerald-cut diamond weighing: 1.03cts; *mounted in 14k white gold; estimated total remaining diamond weight: 1.20ct; size: 6 3/4; signed Love Vera Wang with maker's mark*

\$4,000 - 6,000

Accompanied by GIA report #16886183, dated March 4, 2008, stating the diamond as: D color, SI1 clarity.

294

A DIAMOND RING

mounted in platinum; estimated total diamond weight: 2.10cts; size: 6 1/2

\$3,500 - 4,500

295

A PAIR OF COLORED DIAMOND AND DIAMOND EAR PENDANTS

mounted in rhodium plated 18k white gold; estimated total diamond weight: 5.15cts; length: 2 1/4in.

\$8,000 - 12,000

296

AN EMERALD AND DIAMOND RING

centering an octagonal step-cut emerald weighing: 4.61cts; *mounted in 18k white gold; estimated total diamond weight: 2.90cts; size: 7*

\$4,000 - 6,000

Accompanied by GIA report #2195919504, dated December 21, 2018, stating the emerald as: Natural, Brazilian origin, evidence of moderate clarity enhancement (F2).



297

299

298

300

297

A PAIR OF EMERALD AND DIAMOND EARRINGS

mounted in 18k bi-color; estimated total diamond weight: 2.00cts; length: 1in.

\$3,000 - 5,000

To be sold without reserve

298

A DIAMOND AND EMERALD RING

centering a round brilliant-cut diamond weighing: 1.09cts; mounted in platinum; size: 6 3/4

\$2,000 - 3,000

299

A DIAMOND RIVIERE NECKLACE

mounted in 18k white gold; estimated total diamond weight: 17.35cts; length: 16 1/2in.

\$8,000 - 12,000

300

AN EMERALD AND DIAMOND RING

centering a rectangular emerald-cut emerald weighing: 6.98cts; mounted in platinum; total diamond weight: 1.84cts; size: 7

\$12,000 - 18,000

Accompanied by AGL report #1090335, dated March 20, 2018, stating the emerald as: Natural, minor traditional clarity enhancement.



301

302

304

303

301

A RUBELLITE AND DIAMOND RING

centering an oval brilliant mixed-cut rubellite approximately: 14.30 x 10.64mm; mounted in 14k white gold; size: 6 3/4

\$2,000 - 3,000

To be sold without reserve

302

A RUBELLITE, PINK TOURMALINE AND DIAMOND RING

centering an oval mixed-cut rubellite tourmaline approximately: 14.72 x 12.04 x 8.33mm; mounted in rhodium plated 14k gold; estimated total diamond weight: 1.80cts; size: 7 3/4

\$1,800 - 2,500

303

A PINK SPINEL AND DIAMOND SUITE

mounted in 18K white gold; estimated total diamond weight of the suite: 5.60cts; bracelet length: 7in.; earring length: 1 1/8in.; ring size: 6 3/4

\$2,000 - 3,000

To be sold without reserve

304

A CULTURED PEARL AND DIAMOND NECKLACE

pearls approximately: 11.0mm to 14.0mm; mounted in 18k white gold; estimated total diamond weight: 2.30cts; length: 18in.

\$2,500 - 3,500



306

307

305

308

305

A PAIR OF DIAMOND HOOP EARRINGS
mounted in 18k white gold; estimated total diamond weight: 5.25cts; diameter: 1 1/2in.

\$2,000 - 3,000

306

A DIAMOND RING, TIFFANY & CO.
mounted in platinum; estimated total diamond weight: 2.50cts; size: 5; signed Tiffany & Co.

\$3,000 - 5,000

307

AN AQUAMARINE AND DIAMOND RING
centering a cut-corner rectangular step-cut aquamarine approximately: 23.80 x 19.35 x 14.00mm; mounted in platinum; estimated total diamond weight: 2.50cts; size: 6 1/2

\$4,000 - 6,000

308

A COLORED CULTURED PEARL AND DIAMOND NECKLACE
pearls approximately: 9.3 to 11.7mm; with 18k bi-color gold clasp; length: 17in. (grey pearls untested for origin of color)

\$2,000 - 3,000
 To be sold without reserve



311

310

309

**309
A TOURMALINE AND DIAMOND
BRACELET**

mounted in silver; length: 7 1/4in.; width: 1 1/2in.

\$2,000 - 3,000

**310
TWO PINK AND GREEN TOURMALINE
NECKLACES**

mounted in 18k gold; lengths: 30in. and 35in.

\$2,000 - 3,000
To be sold without reserve

**311
A PAIR OF OPAL AND DIAMOND EAR
PENDANTS**

mounted in silver and 18k gold; estimated total diamond weight: 2.65cts; length: 2 1/2in.

\$2,000 - 3,000
To be sold without reserve



312



313



314



315

312
A PURPLE-PINK SPINEL AND DIAMOND RING

centering an oval brilliant step-cut purple-pink spinel weighing: 3.12cts; mounted in 14k bi-color gold; size: 7

\$2,000 - 3,000
To be sold without reserve

Accompanied by GIA report #2151512828, dated July 02, 2013, stating the purple-pink spinel as: Natural, no indications of heat enhancement.

313
A BLACK OPAL AND DIAMOND RING

centering an oval semi-faceted black opal approximately: 16.09 x 12.38 x 4.53mm; mounted in 18k white gold; size: 6 1/4

\$2,500 - 3,500

314
A TANZANITE AND DIAMOND BRACELET

mounted in silver; length: 7 1/4in.; width: 1 1/8in.

\$2,000 - 3,000

315
A PAIR OF DIAMOND HOOPS
mounted in 18k blackened gold; estimated total diamond weight: 1.70cts; length: 3in.

\$1,500 - 2,000



316



317

PROPERTY OF A LADY

316

A DIAMOND NECKLACE

mounted in platinum; total diamond weight: 18.77cts; gross weight approximately: 46 grams; length: 15 3/4in.

\$10,000 - 15,000

317

A DIAMOND AND COLORED DIAMOND BRACELET

mounted in 18k white gold; total diamond weight: 32.20cts; gross weight approximately: 68 grams; length: 7 1/8in. (yellow diamonds untested for origin of color)

\$15,000 - 20,000



318

318

A TANZANITE AND DIAMOND PENDANT

centering a pear brilliant-cut tanzanite weighing: 26.02cts; mounted in 18k white gold; estimated total diamond weight: 2.00cts; gross weight approximately: 14 grams; length: 2in.

\$3,000 - 5,000

319

A DIAMOND LONG CHAIN

mounted in 18k white gold; estimated total diamond weight: 5.00cts; gross weight approximately: 14 grams; length: 36 3/4in.

\$3,000 - 5,000

319

320

320

A DIAMOND NECKLACE

mounted in 18k white gold; estimated total diamond weight: 6.85cts; gross weight approximately: 17 grams; length: 16 1/2in.

\$4,000 - 6,000

321

321

A COLORED DIAMOND AND DIAMOND HINGED CUFF

total diamond weight: 32.74cts, gross weight approximately 56 grams; width: 1 3/4in.; diameter: 2 3/8in. (orange, brown, pink and yellow diamonds untested for origin of color)

\$18,000 - 22,000



322

A DIAMOND HINGED BANGLE

mounted in rhodium plated 18k white gold; total diamond weight: 18.80cts; gross weight approximately: 107.8 grams; diameter: 2 1/2in.; width: 1 5/8in.

\$8,000 - 12,000

323

A RUBY AND DIAMOND BRACELET

mounted in 18k bi-color gold; total diamond weight: 2.02cts; length: 7in.; with maker's mark

\$6,000 - 8,000

324

A DIAMOND BRACELET

mounted in rhodium plated 18k white gold; estimated total diamond weight: 27.50cts; gross weight approximately: 60 grams; length: 6 3/4in.

\$10,000 - 15,000

325

A TRIO OF THREE DIAMOND AND COLORED DIAMOND ETERNITY BANDS

mounted in 18k bi-color gold; estimated total diamond weight: 9.40cts; size: 7 (yellow diamonds untested for origin of color)

\$4,000 - 6,000

326

A RUBY AND DIAMOND RING

centering a marquise mixed-cut ruby measuring: 12.24 x 6.31 x 4.65mm; mounted in 18k gold; estimated total diamond weight: 1.75cts; size: 5 1/4

\$2,500 - 3,500



327

327
**A DIAMOND AND GEM-SET PENDANT/
CLIP NECKLACE**

*mounted in 18k gold; estimated total
diamond weight: 10.25cts; gross weight
approximately: 142 grams; pendant/clip
length: 1 3/4in; necklace length: 16 1/4in.*

\$8,000 - 10,000



328

329

330

328

A DIAMOND AND GEM-SET BRACELET

mounted in 18k gold; estimated total diamond weight: 1.75cts; gross weight approximately: 35 grams; length: 6 3/4in.

\$1,500 - 2,000

329

A COLORED DIAMOND AND DIAMOND BRACELET

mounted in 18k bi-color gold; total diamond weight: 23.55cts; gross weight approximately: 49 grams; length: 7 1/8in. (yellow diamonds untested for origin of color)

\$10,000 - 15,000

330

A MULTI-COLOR SAPPHIRE AND DIAMOND RING

mounted in 18k rose and blackened gold; estimated total diamond weight: 3.20cts; size: 7 with sizing spring

\$2,000 - 3,000



331



332



333

PROPERTY FROM THE ESTATE OF A LOS ANGELES LADY

331

A DIAMOND NECKLACE

mounted in rhodium plated 14k and 18k white gold; estimated total diamond weight: 6.75cts; length: 16in.

\$2,000 - 2,500

To be sold without reserve

332

A PLIQUE-À-JOUR ENAMEL, ENAMEL AND DIAMOND PENDANT WITH PAIR OF DIAMOND EAR PENDANTS

mounted in 18k bi-color gold; estimated total diamond weight: 5.50cts; pendant signed Masriera, no. L0311L; with signed box

\$2,000 - 3,000

To be sold without reserve

333

A DIAMOND BRACELET

mounted in 18k white gold; estimated total diamond weight: 4.80cts; gross weight approximately: 45 grams; length: 7 1/2in.

\$2,000 - 2,500

To be sold without reserve



334

334

A DIAMOND PENDANT/BROOCH NECKLACE

mounted in platinum; estimated total diamond weight: 6.50cts; necklace length: 15in.

\$2,500 - 3,500



335

335

A DIAMOND BROOCH AND EAR CLIP SET, WASLIKOFF

mounted in platinum; estimated total diamond weight: 4.20cts; brooch dimensions: 1 5/8 x 1 1/2in.; ear clip length: 1 1/4in.; brooch with maker's mark

\$2,000 - 3,000
To be sold without reserve



336

336

A DIAMOND AND COLORED DIAMOND BRACELET WRISTWATCH

case no. 630042; 17j; movement no. 780; centering a pear brilliant-cut yellow diamond weighing 1.13cts; dial and movement signed; mounted in platinum; estimated remaining diamonds weighing: 5.20cts; width: 17mm; length: 7in. (yellow marquise brilliant cut diamonds untested for origin of color)

\$2,000 - 3,000

Accompanied by GIA report #5151945249, dated February 24, 2014, stating the pear brilliant cut diamond as Fancy Deep Yellow Color, artificially irradiated, VVS₂ clarity



337

337

A DIAMOND PENDANT/BROOCH NECKLACE

mounted in 14k bi-color gold; chain 14k white gold; estimated total diamond weight: 2.25cts; chain length: 15in.; pendant dimensions: 1 7/8 x 1 5/8in.

\$2,000 - 2,500
To be sold without reserve

338

A DIAMOND BROOCH

mounted in platinum; estimated total diamond weight: 5.75cts; dimensions: 1 5/8 x 2 1/8in.

\$3,000 - 5,000



339

339

A DIAMOND AND COLORED DIAMOND COLLAR

mounted in 18k white gold; estimated total diamond weight: 7.70cts; gross weight approximately: 95 grams; length: 14 3/4in. (brown diamonds untested for origin of color)

\$4,000 - 6,000



340

340

A PAIR OF DIAMOND EAR CLIPS, ADLER

mounted in 18k white gold; estimated total diamond weight: 6.00cts; length: 1 1/4in.; signed Adler

\$2,500 - 3,500



341



343



342

341

A DIAMOND BROOCH

centering a pear brilliant-cut diamond approximately: 1.00ct; *mounted in platinum with 14k white gold pin stem; estimated total remaining diamond weight: 1.60cts; dimensions: 1 7/8 x 1in.*

\$1,800 - 2,500

To be sold without reserve

342

A DIAMOND CLIP

mounted in platinum, with 14k white gold clip; estimated total diamond weight: 5.85cts; dimensions: 1 7/8 x 1 3/4in.

\$3,000 - 5,000

343

A DIAMOND CLIP

mounted in rhodium plated 18k white gold; estimated total diamond weight: 4.00cts; dimensions: 2 3/8 x 1 1/8in.

\$2,000 - 3,000

To be sold without reserve

344

A CULTURED PEARL AND DIAMOND PENDANT NECKLACE

pearls approximately: 9.4 to 12.3mm; *pendant mounted in 18k white gold with 14k white gold chain; estimated total diamond weight: 2.85cts; chain length: 18in.; pendant length: 3 1/4in.; with fitted box*

\$2,000 - 2,500

To be sold without reserve

345

A DIAMOND AND CULTURED PEARL NECKLACE

pearls approximately: 3.3 to 3.7mm; centering a round brilliant-cut diamond approximately: 0.90ct; *mounted in 18k white gold; estimated total remaining diamond weight: 2.40cts; length: 18in.*

\$2,000 - 3,000

346

A TURN OF THE CENTURY PEARL, DIAMOND AND BLACK ONYX NECKLACE, CIRCA 1905

mounted in platinum; estimated total diamond weight: 1.75cts; length: 15 3/4in.

\$3,000 - 5,000

347

A DIAMOND PENDANT NECKLACE

centering a round transitional brilliant-cut diamond approximately: 1.00ct; *pendant mounted in platinum; 14k white gold chain; chain length: 24 1/4in.; pendant length: 2 1/4in.*

\$2,000 - 3,000



347

346



344



345



349



348



350

348

**AN ART DECO DIAMOND BROOCH,
BERT H. SATZ, CIRCA 1930**

centering an emerald-cut diamond
approximately: 1.20cts; mounted in platinum;
estimated total remaining diamond weight:
5.70cts; dimensions: 2 1/8 x 1 1/8in.; signed
Bert H Satz

\$4,000 - 6,000

349

**AN ART DECO DIAMOND BAR BROOCH,
CIRCA 1925**

mounted in platinum; estimated total
diamond weight: 5.50cts; dimensions: 2
11/16 x 13/16in.

\$2,000 - 3,000

350

**A DIAMOND AND SAPPHIRE PENDANT
NECKLACE**

mounted in platinum; estimated total
diamond weight: 9.00cts; pendant diameter:
2in.; chain length: 19in.

\$4,000 - 6,000

351

**AN ART DECO COLLECTION OF
DIAMOND AND SAPPHIRE JEWELRY,
CIRCA 1920**

comprising one brooch, one pendant and
one pendant/brooch; mounted in platinum;
estimated total diamond weight: 5.40cts;
gross weight approximately: 27 grams;
dimensions: 2 x 1in., 1 5/8 x 1 1/8in. and 1
1/2 x 1 3/5in.

\$2,000 - 3,000

To be sold without reserve

352

**AN ART DECO DIAMOND AND
SYNTHETIC SAPPHIRE PENDANT/
BROOCH NECKLACE, CIRCA 1925**

mounted in platinum; estimated total
diamond weight: 10.00cts; chain length:
23 1/2in.; pendant length: 2 1/8in.; chain
separates into three bracelets, lengths: 6
1/2in.

\$3,500 - 5,000

353

A DIAMOND AND SAPPHIRE PENDANT

mounted in platinum; estimated total
diamond weight: 5.05cts; length 2 1/4in.

\$3,000 - 5,000



351



352



353



354

354

A DIAMOND AND ENAMEL PENDANT NECKLACE

mounted in 18k bi-color gold; chain 18k white gold; estimated total diamond weight 1.00ct; chain length: 18in.; pendant dimensions: 2 1/8 x 1 3/8in.

\$2,000 - 3,000

To be sold without reserve



355

355

AN EMERALD AND DIAMOND PENDANT/BROOCH WITH A PAIR OF DIAMOND AND PLIQUE-À-JOUR ENAMEL EAR PENDANTS

pendant/brooch mounted in 18k bi-color gold; earrings mounted in 18k gold; estimated total diamond weight: 2.40cts; pendant/brooch dimensions: 1 5/8 x 1 5/8in.; earring length: 1in.

\$2,000 - 3,000

To be sold without reserve



356

356

A CULTURED PEARL, RUBY AND DIAMOND SUITE, CHAUMET, PARIS, FRENCH

pearls approximately: 3.0 to 3.4mm; mounted in 18k gold; necklace length: 15 1/2, ear clip length: 1in., ring size: 7; signed Chaumet, Paris, with French assay marks; with signed folder

\$4,000 - 6,000



357



358



359



360



357

A SAPPHIRE, EMERALD AND DIAMOND NECKLACE

mounted in 18k bi-color gold; length: 16 1/4in.

\$2,000 - 3,000

358

A RUBY AND DIAMOND PENDANT/ BROOCH NECKLACE AND PAIR OF EAR PENDANTS

mounted in silver-topped 18k and 14k gold; chain sterling silver; estimated total diamond weight: 3.45cts; pendant dimensions: 1 5/16in.; earring length: 2 1/8in.

\$2,000 - 3,000

To be sold without reserve

359

TWO DIAMOND AND SAPPHIRE BRACELETS

mounted in 14k gold and platinum; estimated total diamond weight: 4.50cts; lengths: 7 1/4in. and 7 1/2in.

\$2,000 - 3,000

To be sold without reserve

360

A RUBY AND DIAMOND PENDANT/ BROOCH WITH A PAIR OF RUBY AND DIAMOND EAR CLIPS

both mounted in 18k bi-color gold; estimated total diamond weight: 5.25cts; pendant/ brooch dimensions: 2 3/4 and 1 1/2in.; ear clip length: 1in.

\$2,500 - 3,500

To be sold without reserve



361



361

**A PAIR OF DIAMOND AND RUBY DAY/
NIGHT EAR CLIPS WITH A PAIR OF
DIAMOND AND COLORED DIAMOND
EAR PENDANTS**

*mounted in 18k white gold; lengths: 2 1/2 x
3 1/2in. (black diamonds untested for origin
of color)*

\$2,500 - 3,500

To be sold without reserve

362

**A RUBY, DIAMOND AND EMERALD
BUTTERFLY BROOCH**

*mounted in 18k white gold; estimated total
diamond weight: 2.10cts; dimensions: 2 x 1
3/4in.*

\$2,500 - 3,500

363

**A RUBY, BLACK ONYX AND DIAMOND
NECKLACE AND EAR PENDANT SET**

*mounted in 18k white gold; estimated total
diamond weight: 4.35cts; necklace length:
17in.; ear pendant length: 2in.*

\$2,000 - 3,000

364

A PAIR OF DIAMOND EAR CLIPS

*mounted in rhodium plated 18k white gold;
estimated total diamond weight: 1.60cts;
dimensions: 1 1/8 x 5/8in.*

\$1,500 - 2,000

To be sold without reserve

365

**A PAIR OF DIAMOND, RUBY AND
EMERALD BROOCHES, SABBADINI,
ITALIAN**

*mounted in 18k bi-color gold; estimated total
diamond weight: 4.10cts; signed Sabbadini,
Italy; with signed box*

\$2,000 - 3,000



362



363



365



364





366



367



368



369

366

AN EMERALD AND DIAMOND PENDANT/BROOCH ON CHAIN

centering a pear brilliant-cut emerald approximately: 15.51 x 10.83 x 6.17mm; pendant mounted in 18k gold; 14k gold chain; estimated total diamond weight: 6.25cts; pendant dimensions: 1 3/4 x 1 1/4in.; chain length: 18in.

\$2,500 - 3,500

367

A RUBY, EMERALD, SAPPHIRE AND DIAMOND TREE CLIP

mounted in 18k bi-color gold; gross weight approximately: 22 grams; dimensions: 2 3/5 x 2in.

\$2,000 - 3,000
To be sold without reserve

368

A DIAMOND AND GEM-SET BROOCH WITH A DIAMOND AND RUBY RING

brooch mounted in 14k bi-color gold; ring mounted in 18k bi-color gold; estimated total diamond weight: 3.05cts; brooch dimensions: 1 1/2 x 2 1/4in.; ring size: 6 1/2

\$2,000 - 3,000
To be sold without reserve

369

A DIAMOND HINGED BANGLE

mounted in 18k bi-color gold; estimated total diamond weight: 3.00cts; gross weight approximately: 52 grams; diameter: 2 1/4in.

\$2,000 - 3,000
To be sold without reserve



371



370



372

370

**A SAPPHIRE, RUBY AND DIAMOND
JESTER PENDANT/BROOCH,
MARIO BOSCHI**

mounted in 18k gold and platinum; estimated total diamond weight: 1.25cts; gross weight approximately: 39 grams; length: 1 13/16in.; signed Mario Boschi

\$2,500 - 3,500

371

**A DIAMOND AND SAPPHIRE NECKLACE
AND EARCLIP SET, CHAUMET, FRENCH**

mounted in 18k gold; estimated total diamond weight: 1.75cts; gross weight approximately: 61 grams; necklace length: 16 3/4in.; earclip length: 7/8in.; signed Chaumet, Paris, no. 2631 and no. 2516; with French assay marks

\$2,000 - 3,000

372

A PAIR OF DIAMOND EAR CLIPS

mounted in 14k bi-color gold; estimated total diamond weight: 2.50cts; gross weight approximately: 29 grams; length: 1in.

\$2,000 - 3,000

To be sold without reserve



373

**373
A DIAMOND AND GEM-SET PENDANT/
BROOCH NECKLACE**

pendant mounted in 18k bi-color gold; chain 18k gold; estimated total diamond weight: 9.90cts; gross weight approximately: 61 grams; chain length: 20in.; pendant dimensions: 2 1/4 x 1 3/4in.

\$3,000 - 5,000



374

**374
A DIAMOND AND RUBY CLIP,
MCTEIGUE**

mounted in 18k gold and platinum; estimated total diamond weight: 2.20cts; dimensions: 2 x 1 1/2in.; with maker's mark

\$2,500 - 3,500



375

**375
A PAIR OF DIAMOND DOORKNOCKER
EAR CLIPS**

mounted in 18k bi-color gold; estimated total diamond weight: 2.50cts; gross weight approximately: 41 grams; length: 1 7/8in.

\$2,000 - 3,000
To be sold without reserve

**376
A DIAMOND AND MOTHER-OF-PEARL
BRACELET WRISTWATCH, VAN CLEEF
& ARPELS**

quartz movement; case and dial signed; case no. 141578; mounted in 18k gold; gross weight approximately: 97 grams; estimated total diamond weight: 2.00cts; width: 25mm; length: 7in.

\$6,000 - 8,000



376



377

378

377

A PAIR OF DIAMOND EAR CLIPS

*mounted in 14k and 18k bi-color gold;
estimated total diamond weight: 4.50cts;
length: 1 3/8in.*

\$2,500 - 3,500

378

A DIAMOND NECKLACE

*mounted in 18k gold; estimated total
diamond weight: 4.20cts; gross weight
approximately: 110 grams; length: 17in.*

\$4,500 - 5,500



379

380

381

383



384



385

379

A DIAMOND PENDANT NECKLACE

mounted in 18k tri-color gold; chain 18k rose gold; estimated total diamond weight: 6.15cts; gross weight approximately: 33 grams; chain length: 17in.; pendant dimensions: 3 x 1 3/8in.

\$2,000 - 3,000

380

A DIAMOND NECKLACE AND STUD EARRING SET

mounted in 18k gold; gross weight approximately: 60 grams; necklace length: 16in.; earring diameter: 17/16in.

\$2,000 - 3,000

381

A 14K GOLD CHAIN, ALLETO & CO.

weight approximately: 89 grams; length: 20in.; signed Alleto & Co.

\$2,000 - 3,000
To be sold without reserve

382

No lot

383

A \$10 GOLD COIN STRAP WRISTWATCH, GLYCINE

mechanical movement; case, dial and movement signed; mounted in 18k gold; gross weight approximately: 28 grams; case width: 29mm; length: 8 1/2in.

\$1,500 - 2,000
To be sold without reserve

384

A COLORED CULTURED PEARL, COLORED DIAMOND AND DIAMOND PENDANT NECKLACE

pearls approximately: 8.7 to 8.8mm; pendant mounted in 18k gold; chain 14k gold; estimated total diamond weight: 2.45cts; gross weight approximately: 66 grams; pendant dimensions: 4 1/4in.; chain length: 16in. (grey pearls and orange and yellow diamonds untested for origin of color)

\$2,000 - 3,000

385

A PAIR OF CITRINE AND DIAMOND EAR CLIPS, SABBADINI, ITALIAN

mounted in 18k gold; estimated total diamond weight: 1.00ct; gross weight approximately: 29 grams; length: 1 1/4in.; signed Sabbadini, Italy

\$2,000 - 3,000
To be sold without reserve



386

387

388

386^Y

**A CORAL AND DIAMOND PENDANT/
BROOCH**

mounted in 18k gold; dimensions: 2 3/8 x 1 5/8in.

\$2,000 - 3,000

To be sold without reserve

387

**A DIAMOND NECKLACE AND EAR
PENDANT SET**

mounted in 18k gold; estimated total diamond weight: 8.20cts; necklace length: 16 1/8in.; earring length: 1 15/16in.

\$2,000 - 3,000

To be sold without reserve

388

**A PAIR OF COLORED CULTURED PEARL
AND DIAMOND EAR PENDANTS**

mounted in 18k gold; estimated total diamond weight: 1.60cts; length: 1 3/4in. (golden pearls untested for origin of color)

\$2,000 - 2,500

To be sold without reserve



389

389
TWO CULTURED PEARL, COLORED CULTURED PEARL AND DIAMOND BROOCHES
 pearls approximately: 11.6 to 15.0mm; mounted in 18k bi-color gold; estimated total diamond weight: 5.15cts; dimensions: 2 5/8 x 2in. and 1 7/8 x 1 7/8in. (grey pearl untested for origin of color)

\$2,000 - 3,000
 To be sold without reserve



390

390
A RUBY AND DIAMOND PENDANT/ BROOCH NECKLACE

mounted in bi-color gold; estimated total diamond weight: 5.75cts; gross weight approximately: 54 grams; length: 18in.

\$2,500 - 3,500

Formerly from The Estate of Charleton Heston



389



391

391

A JADEITE AND COLORED CULTURED PEARL BROOCH

mounted in 22k gold; dimensions: 2 7/8 x 1 1/4in. (red pearls untested for origin of color)

\$2,000 - 2,500

To be sold without reserve



392

392

AN ARCHAEOLOGICAL-REVIVAL SHAKUDO HINGED BANGLE, CASTELLANI, CIRCA 1860

mounted in 15k gold; gross weight approximately: 33 grams; diameter: 2 3/8in.; signed Castellani with maker's mark

\$1,500 - 2,000

To be sold without reserve

Credited for reviving archeological gold techniques in the mid-nineteenth century, the Italian firm Castellani didn't follow traditional jewelry design but created jewels that found inspiration from ancient Greek, Roman and Egyptian styles and methods. This bangle by Castellani beautifully represents that influence and features delicate gold granulation and twisted wire detailing of ancient times. The front is then accented by a Japanese shakudo menuki, an ornate metal section of gold and copper created in Japan to decorate the handle of a sword and were introduced to Europe in the mid-nineteenth century.





393



394

393

**A DIAMOND AND RUBY NECKLACE AND
EAR PENDANTS TOGETHER WITH A
DIAMOND RING**

*mounted in 18k bi-color gold; necklace
length: 16in.; earring length: 1 1/2in.; ring
size: 5*

\$2,000 - 3,000

394

A DIAMOND AND ENAMEL BRACELET

*mounted in 18k gold; gross weight
approximately: 47 grams; length: 7 1/2in.*

\$2,000 - 3,000

To be sold without reserve



395



396



397

395
**A DIAMOND, RUBY, PLIQUE-À-JOUR
ENAMEL AND FRESHWATER CULTURED
PEARL PENDANT/BROOCH, MASRIERA**
*mounted in 18k gold; dimensions: 2 3/4 x
1 3/4in.; signed Masriera, no. A2252A; with
signed box.*

\$2,000 - 3,000

396
A DIAMOND BRACELET AND RING SET
*mounted in 18k bi-color gold; estimated total
diamond weight approximately: 2.05cts;
gross weight approximately: 78 grams;
bracelet length: 7in.; ring size: 7*

\$2,000 - 3,000



398



397

A DIAMOND AND RUBY PENDANT CLIP, CELLINI

mounted in 18k bi-color gold; estimated total diamond weight: 4.30cts; gross weight approximately: 50 grams; dimensions: 2 1/2 x 1 3/4in.; signed Cellini with workshop mark

\$3,000 - 5,000

398

A COLLECTION OF DIAMOND AND COLORED DIAMOND JEWELRY

mounted in 18k bi-color gold; gross weight approximately: 59 grams; necklace length: 17in.; bracelet length: 7in.; earring length: 1 1/2in.; ring size: 7 (yellow diamonds untested for origin of color)

\$2,000 - 3,000

To be sold without reserve



399

399

A DIAMOND, RUBY, FRESHWATER CULTURED PEARL AND PLIQUE-À-JOUR ENAMEL PENDANT/BROOCH NECKLACE, MASRIERA

mounted in 18k gold; chain length: 17in.; pendant dimensions: 2 1/4 x 1 1/2in.; pendant/brooch signed Masriera, no. A3297A; with signed box

\$2,000 - 3,000



400



401



400

A SAPPHIRE, RUBY, DIAMOND AND PLIQUE-À-JOUR ENAMEL BROOCH

mounted in 18k gold and silver-topped gold; dimensions: 2 1/8 x 3 1/2in.

\$2,000 - 3,000

To be sold without reserve



402



403



404

401

A COLLECTION OF DIAMOND, CULTURED PEARL AND PLIQUE-À-JOUR ENAMEL JEWELRY, MASRIERA

comprised of a pendant, pendant brooch and ring; mounted in 18k gold; pendant dimensions: 1 1/2 x 1 5/8in. and 1 3/4 x 1 3/8in.; ring size: 6 3/4; all signed Masriera, no. A4037A, no. A3622A and no. A4447A; with three signed boxes

\$2,000 - 2,500
To be sold without reserve

402

A DIAMOND AND PLIQUE-À-JOUR ENAMEL PENDANT/BROOCH, MASRIERA

mounted in 18k bi-color gold; dimensions: 2 1/8 x 1 1/4in.; signed Masriera, no. C5829C; with signed box

\$1,800 - 2,500
To be sold without reserve

403

A SAPPHIRE, DIAMOND AND PLIQUE-À-JOUR ENAMEL PENDANT/BROOCH, MASRIERA

mounted in 18k gold; enamel and 18k gold chain; chain length: 20in.; pendant dimensions: 1 3/4 x 1 1/4in.; pendant/brooch signed Masriera, no. C7207C; with signed box

\$2,000 - 3,000

404

A DIAMOND AND PLIQUE-À-JOUR ENAMEL PENDANT/BROOCH, MASRIERA

mounted in 18k bi-color gold; dimensions: 2 x 1 7/8in.; signed Masriera, no. L0708L; with signed box and certificate of authenticity

\$1,500 - 2,000
To be sold without reserve

405

A DIAMOND AND PLIQUE-À-JOUR ENAMEL PENDANT/BROOCH, TOGETHER WITH A DIAMOND AND ENAMEL RING, MASRIERA

mounted in 18k gold; brooch dimensions: 7/8 x 1 1/4in.; ring size: 6 1/2; both signed Masriera, no. C6290C and no. B8713B; with two signed boxes and certificate of authenticity

\$2,000 - 2,500
To be sold without reserve



406



405





407



406

A PLIQUE-À-JOUR ENAMEL AND DIAMOND SUITE

mounted in 18k gold; estimated total diamond weight: 5.45cts; necklace length: 15in., bangle diameter: 2 1/2in., earring dimensions: 1 1/4 x 7/8in., ring size: 6; with maker's marks

\$2,500 - 3,500

407

A DIAMOND, SAPPHIRE, RUBY, PLIQUE-À-JOUR ENAMEL AND ENAMEL SUITE AND TWO RINGS

mounted in 18k gold; bangle diameter: 2 1/4in.; ear clip length: 15/16in.; ring sizes: 6 3/4, 7 and 7 1/4; with maker's mark

\$2,000 - 3,000

408

A DIAMOND, CULTURED PEARL AND PLIQUE-À-JOUR ENAMEL PENDANT BROOCH NECKLACE WITH A DIAMOND AND PLIQUE-À-JOUR ENAMEL RING, MASRIERA

pendant mounted in 18k bi-color gold; chain 18k gold; ring mounted in 18k gold; chain length: 18in.; pendant dimensions: 2 3/8 x 1 3/4in.; ring size: 6 3/4; both signed Masriera, no. G3884G and no. B4598B; with two signed boxes and certificate of authenticity for the brooch/pendant

\$2,000 - 3,000

409

A SAPPHIRE, DIAMOND, ENAMEL AND FRESHWATER CULTURED PEARL PENDANT/BROOCH NECKLACE, MASRIERA

mounted in 18k gold; chain length: 16in.; pendant dimensions: 2 1/4 x 1 1/2in.; signed Masriera, no. G4120G; with signed box and certificate of authenticity

\$2,000 - 3,000

410

A RUBY, PEARL AND PLIQUE-À-JOUR ENAMEL PENDANT/BROOCH WITH A PAIR OF DIAMOND AND ENAMEL EAR CLIPS, MASRIERA

mounted in 18k gold; ear clip diameter: 7/8in.; pendant/brooch dimensions: 2 1/8 x 1 1/4in.; both signed Masriera, no. A3863A and C8966C; brooch with box and certificate of authenticity

\$2,000 - 3,000

To be sold without reserve



408



409



410



411



412



413

411

AN ENAMEL CHAIN, MASRIERA

18k gold; gross weight approximately: 44 grams; length: 22 5/8in.; signed Masriera, no. A3777A

\$2,000 - 3,000

To be sold without reserve

412

A DIAMOND, FRESHWATER CULTURED PEARL, PLIQUE-À-JOUR ENAMEL PENDANT/BROOCH NECKLACE, MASRIERA

mounted in 18k bi-color gold; chain length: 16in.; pendant dimensions: 2 1/2 x 2 1/4in.; signed Masriera, no. C2486C; with signed box

\$2,500 - 3,500

413

TWO DIAMOND, CULTURED PEARL, AND PLIQUE-À-JOUR ENAMEL PENDANT/BROOCHES, MASRIERA

both mounted in 18k gold; enamel and 18k gold necklace length: 21in.; pendant/brooch dimensions: 1 5/8 x 1 3/4in.; both signed Masriera, no. B6671B and no. C1647C

\$2,000 - 3,000

To be sold without reserve



Bonhams

AUCTIONEERS SINCE 1793



New York Jewels

New York | May 1, 2019

INQUIRIES

Brett O'Connor

+1 (212) 461 6526

brett.oconnor@bonhams.com

bonhams.com/jewelry

**A 10.73 CARATS
DIAMOND RING**
\$220,000 - 280,000

**AN 18K GOLD, TURQUOISE
AND ENAMEL BRACELET,
JEAN SCHLUMBERGER
FOR TIFFANY & CO.**
\$10,000 - 15,000

**AN 18K GOLD, DIAMOND
AND ENAMEL BRACELET,
JEAN SCHLUMBERGER
FOR TIFFANY & CO.**
\$12,000 - 18,000

CONDITIONS OF SALE

The following Conditions of Sale, as amended by any published or posted notices or verbal announcements during the sale, constitute the entire terms and conditions on which property listed in the catalog shall be offered for sale or sold by Bonhams & Butterfields Auctioneers Corp. and any consignor of such property for whom we act as agent. If live online bidding is available for the subject auction, additional terms and conditions of sale relating to online bidding will apply; see www.bonhams.com/ WebTerms for the supplemental terms. As used herein, "Bonhams," "we" and "us" refer to Bonhams & Butterfields Auctioneers Corp.

1. As used herein, the term "bid price" means the price at which a lot is successfully knocked down to the purchaser. The term "purchase price" means the aggregate of (a) the bid price, (b) a PREMIUM retained by us and payable by the purchaser EQUAL TO 27.5% OF THE FIRST \$3,000 OF THE BID PRICE, 25% OF THE AMOUNT OF THE BID PRICE ABOVE \$3,000 UP TO AN INCLUDING \$400,000, 20% OF THE AMOUNT OF THE BID PRICE ABOVE \$400,000 UP TO AND INCLUDING \$4,000,000, AND 13.9% OF THE AMOUNT OF THE BID PRICE OVER \$4,000,000, and (c) unless the purchaser is exempt by law from the payment thereof, any Alabama, Arizona, California, Colorado, Connecticut, Florida, Georgia, Hawaii, Idaho, Illinois, Iowa, Indiana, Kentucky, Louisiana, Maine, Massachusetts, Michigan, Minnesota, Nevada, New Jersey, New York, North Carolina, Ohio, Pennsylvania, Rhode Island, Texas, Utah, Virginia, Washington, D.C., Washington state, Wisconsin, Wyoming or other state or local sales tax (or compensating use tax) and other applicable taxes. With regard to New York sales tax, please refer to the "Sales and Use Tax" section of these Conditions of Sale.

2. On the fall of the auctioneer's hammer, the highest bidder shall have purchased the offered lot in accordance and subject to compliance with all of the conditions set forth herein and (a) assumes full risk and responsibility therefor, (b) if requested will sign a confirmation of purchase, and (c) will pay the purchase price in full or such part as we may require for all lots purchased. No lot may be transferred. Any person placing a bid as agent on behalf of another (whether or not such person has disclosed that fact or the identity of the principal) may be jointly and severally liable with the principal under any contract resulting from the acceptance of a bid.

Unless otherwise agreed, payment in good funds is due and payable within five (5) business days following the auction sale. Whenever the purchaser pays only a part of the total purchase price for one or more lots purchased, we may apply such payments, in our sole discretion, to the lot or lots we choose. Payment will not be deemed made in full until we have collected good funds for all amounts due.

Payment for purchases may be made in or by (a) cash, (b) cashier's check or money order, (c) personal check with approved credit drawn on a U.S. bank, (d) wire transfer or other immediate bank transfer, or (e) Visa, MasterCard, American Express or Discover credit, charge or debit card. A processing fee will be assessed on any returned checks. Please note that the amount of cash notes and cash equivalents that can be accepted from a given purchaser may be limited.

To the fullest extent permitted by applicable law: The purchaser grants us a security interest in the property, and we may retain as collateral security for the purchaser's obligations to us, any property and all monies held or received by us for the account of the purchaser, in our possession. We also retain all rights of a secured party under the California Commercial Code. If the foregoing conditions or any other applicable conditions herein are not complied with, in addition to all other remedies available to us and the consignor by law, we may at our election: (a) hold the purchaser liable for the full purchase price and any

late charges, collection costs, attorneys' fees and costs, expenses and incidental damages incurred by us or the consignor arising out of the purchaser's breach; (b) cancel the sale, retaining as liquidated damages all payments made by the purchaser; and/or (c) cancel the sale and/or resell the purchased property, at public auction and/or by private sale, and in such event the purchaser shall be liable for the payment of all consequential damages, including any deficiencies or monetary losses, and all costs and expenses of such sale or sales, our commissions at our standard rates, all other charges due hereunder, all late charges, collection costs, attorneys' fees and costs, expenses and incidental damages. In addition, where two or more amounts are owed in respect of different transactions by the purchaser to us, to Bonhams 1793 Limited and/or to any of our other affiliates, subsidiaries or parent companies worldwide within the Bonhams Group, we reserve the right to apply any monies paid in respect of a transaction to discharge any amount owed by the purchaser. If all fees, commissions, premiums, bid prices and other sums due to us from the purchaser are not paid promptly as provided in these Conditions of Sale, we reserve the right to impose a finance charge equal to 1.5% per month (or, if lower, the maximum nonusurious rate of interest permitted by applicable law), on all amounts due to us beginning on the 31st day following the sale until payment is received, in addition to other remedies available to us by law.

3. We reserve the right to withdraw any property and to divide and combine lots at any time before such property's auction. Unless otherwise announced by the auctioneer at the time of sale, all bids are per lot as numbered in the catalog and no lots shall be divided or combined for sale.

4. We reserve the right to reject a bid from any bidder, to split any bidding increment, and to advance the bidding in any manner the auctioneer may decide. In the event of any dispute between bidders, or in the event the auctioneer doubts the validity of any bid, the auctioneer shall have sole and final discretion either to determine the successful bidder or to re-offer and resell the article in dispute. If any dispute arises after the sale, our sales records shall be conclusive in all respects.

5. If we are prevented by fire, theft or any other reason whatsoever from delivering any property to the purchaser or a sale otherwise cannot be completed, our liability shall be limited to the sum actually paid therefor by the purchaser and shall in no event include any compensatory, incidental or consequential damages.

6. If a lot is offered subject to a reserve, we may implement such reserve by bidding on behalf of the consignor, whether by opening bidding or continuing bidding in response to other bidders until reaching the reserve. If we have an interest in an offered lot and the proceeds therefrom other than our commissions, we may bid therefor to protect such interest. **CONSIGNORS ARE NOT ALLOWED TO BID ON THEIR OWN ITEMS.**

7. All statements contained in the catalog or in any bill of sale, condition report, invoice or elsewhere as to authorship, period, culture, source, origin, measurement, quality, rarity, provenance, importance, exhibition and literature of historical relevance, or physical condition **ARE QUALIFIED STATEMENTS OF OPINION AND NOT REPRESENTATIONS OR WARRANTIES.** No employee or agent of Bonhams is authorized to make on our behalf or on that of the consignor any representation or warranty, oral or written, with respect to any property.

8. All purchased property shall be removed from the premises at which the sale is conducted by the date(s) and time(s) set forth in the "Buyer's Guide" portion of this catalog. Property designated with a "W" and associated purchased lots, if not removed promptly following sale, will be transferred to an offsite warehouse at the purchaser's

risk and expense, as set forth in more detail in the "Buyer's Guide." Purchased property that is permitted to remain onsite at Bonhams' facility should be removed at the purchaser's expense not later than 5:00 p.m. Pacific Time five (5) business days following the date of the sale. If not so removed, a storage fee of \$5.00 per lot per day will be payable to us by the purchaser beginning at the close of the 21st day following the sale, and we may thereafter transfer such property to an offsite warehouse at the purchaser's risk and expense. Accounts must be settled in full before property will be released. Packing and handling of purchased lots are the responsibility of the purchaser. Bonhams can provide packing and shipping services for certain items as noted in the "Buyer's Guide" section of the catalog.

9. The copyright in the text of the catalog and the photographs, digital images and illustrations of lots in the catalog belong to Bonhams or its licensors. You will not reproduce or permit anyone else to reproduce such text, photographs, digital images or illustrations without our prior written consent.

10. These Conditions of Sale shall bind the successors and assigns of all bidders and purchasers and inure to the benefit of our successors and assigns. No waiver, amendment or modification of the terms hereof (other than posted notices or oral announcements during the sale) shall bind us unless specifically stated in writing and signed by us. If any part of these Conditions of Sale is for any reason invalid or unenforceable, the rest shall remain valid and enforceable.

11. These Conditions of Sale and the purchaser's and our respective rights and obligations hereunder are governed by the laws of the State of California. By bidding at an auction, each purchaser and bidder agrees to be bound by these Conditions of Sale. Any dispute, controversy or claim arising out of or relating to this agreement, or the breach, termination or validity thereof, brought by or against Bonhams (but not including claims brought against the consignor by the purchaser of lots consigned hereunder) shall be resolved by the procedures set forth below.

MEDIATION AND ARBITRATION PROCEDURES

(a) Within 30 days of written notice that there is a dispute, the parties or their authorized and empowered representatives shall meet by telephone and/or in person to mediate their differences. If the parties agree, a mutually acceptable mediator shall be selected and the parties will equally share such mediator's fees. The mediator shall be a retired judge or an attorney familiar with commercial law and trained in or qualified by experience in handling mediations. Any communications made during the mediation process shall not be admissible in any subsequent arbitration, mediation or judicial proceeding. All proceedings and any resolutions thereof shall be confidential, and the terms governing arbitration set forth in paragraph (c) below shall govern.

(b) If mediation does not resolve all disputes between the parties, or in any event no longer than 60 days after receipt of the written notice of dispute referred to above, the parties shall submit the dispute for binding arbitration before a single neutral arbitrator. Such arbitrator shall be a retired judge or an attorney familiar with commercial law and trained in or qualified by experience in handling arbitrations. Such arbitrator shall make all appropriate disclosures required by law. The arbitrator shall be drawn from a panel of a national arbitration service agreed to by the parties, and shall be selected as follows: (i) If the national arbitration service has specific rules or procedures, those rules or procedures shall be followed; (ii) If the national arbitration service does not have rules or procedures for the selection of an arbitrator, the arbitrator shall be an individual jointly agreed to by the parties. If the parties cannot agree on a national arbitration service, the arbitration shall be

CONDITIONS OF SALE - CONTINUED

conducted by the American Arbitration Association, and the arbitrator shall be selected in accordance with the Rules of the American Arbitration Association. The arbitrator's award shall be in writing and shall set forth findings of fact and legal conclusions.

(c) Unless otherwise agreed to by the parties or provided by the published rules of the national arbitration service:

(i) the arbitration shall occur within 60 days following the selection of the arbitrator;

(ii) the arbitration shall be conducted in the designated location, as follows: (A) in any case in which the subject auction by Bonhams took place or was scheduled to take place in the State of New York or Connecticut or the Commonwealth of Massachusetts, the arbitration shall take place in New York City, New York; (B) in all other cases, the arbitration shall take place in the city of San Francisco, California; and

(iii) discovery and the procedure for the arbitration shall be as follows:

(A) All arbitration proceedings shall be confidential;

(B) The parties shall submit written briefs to the arbitrator no later than 15 days before the arbitration commences;

(C) Discovery, if any, shall be limited as follows: (I) Requests for no more than 10 categories of documents, to be provided to the requesting party within 14 days of written request therefor; (II) No more than two (2) depositions per party, provided however, the deposition(s) are to be completed within one (1) day; (III) Compliance with the above shall be enforced by the arbitrator in accordance with California law;

(D) Each party shall have no longer than eight (8) hours to present its position. The entire hearing before the arbitrator shall not take longer than three (3) consecutive days;

(E) The award shall be made in writing no more than 30 days following the end of the proceeding. Judgment upon the award rendered by the arbitrator may be entered by any court having jurisdiction thereof.

To the fullest extent permitted by law, and except as required by applicable arbitration rules, each party shall bear its own attorneys' fees and costs in connection with the proceedings and shall share equally the fees and expenses of the arbitrator.

LIMITED RIGHT OF RESCISSION

If within one (1) year from the date of sale, the original purchaser (a) gives written notice to us alleging that the identification of Authorship (as defined below) of such lot as set forth in the **BOLD TYPE** heading of the catalog description of such lot (as amended by any saleroom notices or verbal announcements during the sale) is not substantially correct based on a fair reading of the catalog (including the terms of any glossary contained therein), and (b) within 10 days after such notice returns the lot to us in the same condition as at the time of sale, and (c) establishes the allegation in the notice to our satisfaction (including by providing one or more written opinions by recognized experts in the field, as we may reasonably require), then the sale of such lot will be rescinded and, unless we have already paid to the consignor monies owed him in connection with the sale, the original purchase price will be refunded.

If, prior to receiving such notice from the original purchaser alleging such defect, we have paid the consignor monies owed him in connection with the sale, we shall pay the original purchaser the amount of our commissions, any other sale proceeds to which we are entitled and applicable taxes received from the purchaser on the sale and make demand on the consignor to pay the balance of the original purchase price to the original purchaser. Should the consignor fail to pay such amount promptly, we may disclose the identity of the consignor and assign to the original purchaser our rights against the consignor with respect to the lot the sale of which is sought to be rescinded. Upon such disclosure and assignment, any liability of Bonhams as consignor's agent with respect to said lot shall automatically terminate.

The foregoing limited right of rescission is available to the original purchaser only and may not be assigned to or relied upon by any subsequent transferee of the property sold. The purchaser hereby accepts the benefit of the consignor's warranty of title and other representations and warranties made by the consignor for the purchaser's benefit. Nothing in this section shall be construed as an admission by us of any representation of fact, express or implied, obligation or responsibility with respect to any lot. **THE PURCHASER'S SOLE AND EXCLUSIVE**

REMEDY AGAINST BONHAMS FOR ANY REASON WHATSOEVER IS THE LIMITED RIGHT OF RESCISSION DESCRIBED IN THIS SECTION.

"Authorship" means only the identity of the creator, the period, culture and source or origin of the lot, as the case may be, as set forth in the **BOLD TYPE** heading of the print catalog entry. The right of rescission does not extend to: (a) works of art executed before 1870 (unless these works are determined to be counterfeits created since 1870), as this is a matter of current scholarly opinion which can change; (b) titles, descriptions, or other identification of offered lots, which information normally appears in lower case type below the **BOLD TYPE** heading identifying the Authorship; (c) Authorship of any lot where it was specifically mentioned that there exists a conflict of specialist or scholarly opinion regarding the Authorship of the lot at the time of sale; (d) Authorship of any lot which as of the date of sale was in accordance with the then generally-accepted opinion of scholars and specialists regarding the same; or (e) the identification of periods or dates of creation in catalog descriptions which may be proven inaccurate by means of scientific processes that are not generally accepted for use until after publication of the catalog in which the property is offered or that were unreasonably expensive or impractical to use at the time of such publication.

LIMITATION OF LIABILITY

EXCEPT AS EXPRESSLY PROVIDED ABOVE, ALL PROPERTY IS SOLD "AS IS." NEITHER BONHAMS NOR THE CONSIGNOR MAKES ANY REPRESENTATION OR WARRANTY, EXPRESS OR IMPLIED, AS TO THE MERCHANTABILITY, FITNESS OR CONDITION OF THE PROPERTY OR AS TO THE CORRECTNESS OF DESCRIPTION, GENUINENESS, ATTRIBUTION, PROVENANCE OR PERIOD OF THE PROPERTY OR AS TO WHETHER THE PURCHASER ACQUIRES ANY COPYRIGHTS OR OTHER INTELLECTUAL PROPERTY RIGHTS IN LOTS SOLD OR AS TO WHETHER A WORK OF ART IS SUBJECT TO THE ARTIST'S MORAL RIGHTS OR OTHER RESIDUAL RIGHTS OF THE ARTIST. THE PURCHASER EXPRESSLY ACKNOWLEDGES AND AGREES THAT IN NO EVENT SHALL BONHAMS BE LIABLE FOR ANY DAMAGES INCLUDING, WITHOUT LIMITATION, ANY COMPENSATORY, INCIDENTAL OR CONSEQUENTIAL DAMAGES.

SELLER'S GUIDE

SELLING AT AUCTION

Bonhams can help you every step of the way when you are ready to sell art, antiques and collectible items at auction. Our regional offices and representatives throughout the US are available to service all of your needs. Should you have any further questions, please visit our website at www.bonhams.com/us for more information or call our Client Services Department at +1 (323) 850 7500.

AUCTION ESTIMATES

The first step in the auction process is to determine the auction value of your property. Bonhams' world-renowned specialists will evaluate your special items at no charge and in complete confidence. You can obtain an auction estimate in many ways:

- Attend one of our Auction Evaluation Events held regularly at our galleries and in other major metropolitan areas. The updated schedule for Bonhams Auction Evaluation Events is available at www.bonhams.com/us.
- Call our Client Services Department to schedule a private appointment at one of our galleries. If you have a large collection, our specialists can travel, by appointment, to evaluate your property on site.
- Send clear photographs to us of each individual item, including item dimensions and other pertinent information with each picture. Photos should be sent to Bonhams' address in envelopes marked

as "photo auction estimate". Alternatively, you can submit your request using our online form at www.bonhams.com/us. Digital images may be attached to the form. Please limit your images to no more than five (5) per item.

CONSIGNING YOUR PROPERTY

After you receive an estimate, you may consign your property to us for sale in the next appropriate auction. Our staff assists you throughout the process, arranging transportation of your items to our galleries (at the consignor's expense), providing a detailed inventory of your consignment, and reporting the prices realized for each lot. We provide secure storage for your property in our warehouses and all items are insured throughout the auction process. You will receive payment for your property approximately 35 days after completion of sale.

Sales commissions vary with the potential auction value of the property and the particular auction in which the property is offered. Please call us for commission rates.

PROFESSIONAL APPRAISAL SERVICES

Bonhams' specialists conduct insurance and fair market value appraisals for private collectors, corporations, museums, fiduciaries and government entities on a daily basis. Insurance appraisals, used for insurance purposes, reflect the cost of replacing property in today's retail market. Fair market value appraisals are used for estate,

tax and family division purposes and reflect prices paid by a willing buyer to a willing seller.

When we conduct a private appraisal, our specialists will prepare a thorough inventory listing of all your appraised property by category. Valuations, complete descriptions and locations of items are included in the documentation.

Appraisal fees vary according to the nature of the collection, the amount of work involved, the travel distance, and whether the property is subsequently consigned for auction.

Our appraisers are available to help you anywhere and at any time. Please call our Client Services Department to schedule an appraisal.

ESTATE SERVICES

Since 1865, Bonhams has been serving the needs of fiduciaries – lawyers, trust officers, accountants and executors – in the disposition of large and small estates. Our services are specially designed to aid in the efficient appraisal and disposition of fine art, antiques, jewelry, and collectibles. We offer a full range of estate services, ranging from flexible financial terms to tailored accounting for heirs and their agents to world-class marketing and sales support.

For more information or to obtain a detailed Trust and Estates package, please visit our website at www.bonhams.com/us or contact our Client Services Department.

BUYER'S GUIDE

BIDDING & BUYING AT AUCTION

Whether you are an experienced bidder or an enthusiastic novice, auctions provide a stimulating atmosphere unlike any other. Bonhams previews and sales are free and open to the public. As you will find in these directions, bidding and buying at auction is easy and exciting. Should you have any further questions, please visit our website at www.bonhams.com or call our Client Services Department at +1 (323) 850 7500.

Catalogs

Before each auction we publish illustrated catalogs that include dates and times for previews and auctions. Our catalogs also provide descriptions and estimated values for each "lot." A lot may refer to a single item or to a group of items auctioned together. We offer our catalogs by subscription or by single copy. For information on subscribing to our catalogs, you may refer to the subscription form in this catalog, call our Client Services Department, or visit our website at www.bonhams.com/us.

Previews

Auction previews are your chance to inspect each lot prior to the auction. We encourage you to look closely and examine each object on which you may want to bid so that you will know as much as possible about it. Items are sold "as is" and with all faults; illustrations in our catalogs, website and other materials are provided for identification only. At the previews, our staff is always available to answer your questions and guide you through the auction process. Condition reports may be available upon request.

Estimates

Bonhams catalogs include estimates for each lot, exclusive of buyer's premium and tax. The estimates are provided as an approximate guide to current market value and should not be interpreted as a representation or prediction of actual selling prices. They are determined well in advance of a sale and are subject to revision. Please contact us should you have any questions about value estimates.

Reserves

All lots in a catalog are subject to a reserve unless otherwise indicated. The reserve is the minimum price that the seller is willing to accept for a lot. This amount is confidential and does not exceed the low estimated value.

BIDDING AT AUCTION

At Bonhams, you can bid in many ways: in person, via absentee bid, over the phone, or via Bonhams' online bidding facility. Absentee bids can be submitted in person, online, via fax or via email.

A valid Bonhams client account is required to participate in bidding activity. You can obtain registration information online, at the reception desk or by calling our Client Services Department.

By bidding at auction, whether in person or by agent, by absentee bid, telephone, online or other means, the buyer or bidder agrees to be bound by the Conditions of Sale.

Lots are auctioned in consecutive numerical order as they appear in the catalog. Bidding normally begins below the low estimate. The auctioneer will accept bids from interested parties present in the saleroom, from telephone bidders, and from absentee bidders who have left written bids in advance of the sale. The auctioneer may also execute bids on behalf of the consignor up to the amount of the reserve, but never above it.

We assume no responsibility for failure to execute bids for any reason whatsoever.

In Person

If you are planning to bid at auction, you will need to register at the reception desk in order to receive a numbered bid card. To place a bid, hold up your card so that the auctioneer can clearly see it. Decide on the maximum amount that you wish to pay, exclusive of buyer's premium and tax, and continue bidding until your bid prevails or you reach your limit. If you are the successful bidder on a lot, the auctioneer will acknowledge your paddle number and bid amount.

Absentee Bids

As a service to those wishing to place bids, we may at our discretion accept bids without charge in advance of sale by telephone, by facsimile or in writing on bidding forms available from us. "Buy" bids will not be accepted; all bids must state the highest bid price the bidder is willing to pay. Our auction staff will try to bid just as you would, with the goal of obtaining the

item at the lowest bid price possible. In the event identical bids are submitted, the earliest bid submitted will take precedence. Absentee bids shall be executed in competition with other auction participants. A friend or agent may place bids on your behalf, provided that we have received your written authorization prior to the sale. Absentee bid forms are available in our catalogs, online at www.bonhams.com/us, and at our San Francisco, Los Angeles and New York galleries.

By Telephone

Under special circumstances, we can arrange for you to bid by telephone. To arrange for a telephone bid, please contact our Client Services Department a minimum of 24 hours prior to the sale.

Online

Web users may place absentee bids online from anywhere in the world. To bid online, please visit our website at www.bonhams.com/us.

We are pleased to make our live online bidding facility available to bidders in this sale.

Additional terms and conditions of sale relating to online bidding will apply. Please see www.bonhams.com/25329 or contact the Client Services Department to obtain information and learn how you can register and bid online in this sale.

Bid Increments

Bonhams generally uses the following increment multiples as bidding progresses:

\$50-200	by \$10s
\$200-500	by \$20/50/80s
\$500-1,000	by \$50s
\$1,000-2,000	by \$100s
\$2,000-5,000	by \$200/500/800s
\$5,000-10,000	by \$500s
\$10,000-20,000	by \$1,000s
\$20,000-50,000	by \$2,000/5,000/8,000s
\$50,000-100,000	by \$5,000s
\$100,000-200,000	by \$10,000s
above \$200,000	at auctioneer's discretion

The auctioneer may split or reject any bid at any time at his or her discretion as outlined in the Conditions of Sale.

Currency Converter

Solely for the convenience of bidders, a currency converter may be provided at Bonhams sales. The rates quoted for conversion of other currencies to U.S. Dollars are indications only and should not be relied upon by a bidder, and neither Bonhams nor its agents shall be responsible for any errors or omissions in the operation or accuracy of the currency converter.

Buyer's Premium

A buyer's premium is added to the winning bid price of each individual lot purchased, at the rates set forth in the Conditions of Sale. The winning bid price plus the premium constitute the purchase price for the lot. Applicable sales taxes are computed based on this figure, and the total becomes your final purchase price.

Unless specifically illustrated and noted, fine art frames are not included in the estimate or purchase price. Bonhams accepts no liability for damage or loss to frames during storage or shipment.

All sales are final and subject to the Conditions of Sale found in our catalogs, on our website, and available at the reception desk.

Payment

All buyers are asked to pay and pick up by 3pm on the business day following the auction. Payment may be made to Bonhams by cash, checks drawn on a U.S. bank, money order, wire transfer, or by Visa, MasterCard, American Express or Discover credit or charge card or debit card. All items must be paid for within 5 business days of the sale. Please note that payment by personal or business check may result in property not being released until purchase funds clear our bank.

Sales Tax

Residents of states listed in Paragraph 1 of the Conditions of Sale must pay applicable sales tax. Other state or local taxes (or compensation use taxes) may apply. Sales tax will be automatically added to the invoice unless a valid resale number has been furnished or the property is shipped via common carrier to destinations outside the states listed in

the Conditions of Sale. If you wish to use your resale license please contact Cashiers for our form.

Bonhams can accommodate shipping for certain items. Please contact our Cashiers Department for more information or to obtain a quote. Refer to Conditions of Sale for special terms governing the shipment of Arms and Wine. Shipments are made during weekday business hours up to four weeks after payment is received. Carriers are not permitted to deliver to P.O. Boxes.

International buyers are responsible for all import/export customs duties and taxes. An invoice stating the actual purchase price(s) will accompany all international purchases.

Simultaneous sale property collection notice:

If this sale previews in multiple cities, please see the title page for details regarding final location of property for collection.

Auction Results

Auction results are usually available on the next business day following the sale or online at www.bonhams.com/us.

Bonhams Specialist Departments

19th Century Paintings London

Charles O' Brien
+44 20 7468 8360
New York
Madalina Lazen
+1 212 644 9108

20th Century British Art London

Matthew Bradbury
+44 20 7468 8295

20th Century Fine Art San Francisco

Sonja Moro
+1 415 503 3412

Aboriginal Art Australia

Francesca Cavazzini
+61 2 8412 2222

African, Oceanic & Pre-Columbian Art Los Angeles

Fredric W. Backlar
+1 323 436 5416 •

American Paintings New York

Jennifer Jacobsen
+1 917 206 1699
Elizabeth Goodridge
+1 917 206 1621

Antiquities London

Francesca Hickin
+44 20 7468 8226

Antique Arms & Armour London

David Williams
+44 20 7393 3807

Art Collections, Estates & Valuations London

Harvey Cammell
+44 (0) 20 7468 8340

New York
Sherri Cohen
+1 917 206 1671

Los Angeles
Leslie Wright
+1 323 436 5408
Joseph Francaviglia
+1 323 436 5443

Lydia Ganley
+1 323 436 4496
San Francisco
Victoria Richardson
+1 415 503 3207
Celeste Smith
+1 415 503 3214

Australian Art Australia

Merryn Schriever
+61 2 8412 2222
Alex Clark
+61 3 8640 4088

Australian Colonial Furniture and Australiana

+61 2 8412 2222

Books, Maps & Manuscripts London

Matthew Haley
+44 20 7393 3817

New York
Ian Ehling
+1 212 644 9094
Darren Sutherland
+1 212 461 6531

Los Angeles
Catherine Williamson
+1 323 436 5442

San Francisco
Adam Stackhouse
+1 415 503 3266

British & European Glass London

John Sandon
+44 20 7468 8244

British Ceramics London

John Sandon
+44 20 7468 8244

California & Western Paintings & Sculpture Los Angeles

Scot Levitt
+1 323 436 5425
Kathy Wong
+1 323 436 5415
San Francisco
Aaron Bastian
+1 415 503 3241

Carpets London

Helena Gumley-Mason
+44 20 8393 2615

Chinese & Asian Art London

Asaph Hyman
+44 20 7468 5888

New York
Bruce MacLaren,
+1 917 206 1677
Ming Hua
+1 646 837 8132
Harold Yeo
+1 917 206 1628 •

Los Angeles
Rachel Du
+1 323 436 5587

San Francisco
Dessa Goddard
+1 415 503 3333
Henry Kleinhenz
+1 415 503 3336
Daniel Herske
+1 415 503 3271

Lingling Shang
+1 415 503 3207 •

Amelia Chao
+1 415 503 3397

Hong Kong
Xibo Wang,
+852 3607 0010

Australia
Yvett Klein,
+61 2 8412 2231

Chinese Paintings Hong Kong

Iris Miao,
+852 3607 0011

Clocks London

James Stratton
+44 20 7468 8364
New York
Jonathan Snellenburg
+1 212 461 6530

Coins & Medals London

John Millensted
+44 20 7393 3914
Los Angeles
Paul Song
+1 323 436 5455

Entertainment Memorabilia London

Katherine Schofield
+44 20 7393 3871
Los Angeles
Catherine Williamson
+1 323 436 5442
Dana Hawkes
+1 978 283 1518

European Ceramics London

Sebastian Kuhn
+44 20 7468 8384

European Paintings London

Charles O' Brien
+44 20 7468 8360
New York
Madalina Lazen
+1 212 644 9108
Los Angeles
Mark Fisher
+1 323 436 5488
Rocco Rich
+1 323 436 5410

European Sculptures & Works of Art London

Michael Lake
+44 20 8963 6813

Furniture and Decorative Art London

Thomas Moore
+44 20 8963 2816
Los Angeles
Angela Past
+1 323 436 5422
Anna Hicks
+1 323 436 5463

Greek Art London

Anastasia Orfanidou
+44 20 7468 8356

Golf Sporting Memorabilia Edinburgh

Kevin McGimpsey
+44 131 240 2296
Hamish Wilson
+44 131 240 0916

Irish Art London

Penny Day
+44 20 7468 8366

Impressionist & Modern Art London

India Phillips
+44 20 7468 8328
New York
Caitlyn Pickens
+1 212 644 9135
Los Angeles
Kathy Wong
+1 323 436 5415

Indian, Himalayan & Southeast Asian Art New York

Mark Rasmussen
+1 917 206 1688

Hong Kong
Edward Wilkinson
+852 2918 4321

Islamic & Indian Art London

Oliver White
+44 20 7468 8303

Japanese Art London

Suzannah Yip
+44 20 7468 8368
New York
Jeff Olson
+1 212 461 6516

Jewellery London

Jean Ghika
+44 20 7468 8282
Emily Barber
+44 20 7468 8284

New York
Brett O'Connor
+1 212 461 6525

Caroline Morrissey
+1 212 644 9046
Camille Barbier
+1 212 644 9035

Los Angeles
Dana Ehrman
+1 323 436 5407

Emily Waterfall
+1 323 436 5426
San Francisco

Shannon Beck
+1 415 503 3306

Hong Kong
Paul Redmayne
+852 3607 0006

Marine Art London

Veronique Scorer
+44 20 7393 3962

**Mechanical Music
London**

Jon Baddeley
+44 20 7393 3872

**Modern & Contemporary
African Art**

London
Giles Peppiatt
+ 44 20 7468 8355

New York
Hayley Grundy
+1 917 206 1624

**Modern & Contemporary
Middle Eastern Art**

London
Nima Sagharchi
+44 20 7468 8342

**Modern & Contemporary
South Asian Art**

London
Tahmina Ghaffar
+44 207 468 8382

**Modern Decorative
Art + Design**

London
Mark Oliver
+44 20 7393 3856

New York
Benjamin Walker
+1 212 710 1306
Dan Tolson
+1 917 206 1611

Los Angeles
Jason Stein
+1 323 436 5466

**Motor Cars
London**

Tim Schofield
+44 20 7468 5804

New York
Rupert Banner
+1 212 461 6515
Eric Minoff

+1 917 206 1630
Evan Ide
+1 917 340 4657

Los Angeles
Jakob Greisen
+1 415 503 3284

Michael Caimano
+1 929 666 2243

San Francisco
Mark Osborne
+1 415 503 3353

Europe
Philip Kantor
+32 476 879 471

**Automobilia
London**

Toby Wilson
+44 20 8963 2842
Adrian Pipiros
+44 20 8963 2840

**Motorcycles
London**

Ben Walker
+44 20 8963 2819
James Stensel
+44 20 8963 2818

Los Angeles
Craig Mallery
+1 323 436 5470

**Museum Services
San Francisco**

Laura King Pfaff
+1 415 503 3210

**Native American Art
San Francisco**

Ingmars Lindbergs
+1 415 503 3393

**Natural History
Los Angeles**

Claudia Florian
+1 323 436 5437
+1 310 469 8567 •
Thomas E. Lindgren
+1 310 469 8567 •

**Old Master Pictures
London**

Andrew Mckenzie
+44 20 7468 8261

Los Angeles
Mark Fisher
+1 323 436 5488

**Orientalist Art
London**

Charles O'Brien
+44 20 7468 8360

**Photography
New York**

Laura Paterson
+1 917 206 1653
Los Angeles & San Francisco
Morisa Rosenberg
+1 323 436 5435
+1 415 503 3259

**Post-War and
Contemporary Art**

London
Ralph Taylor
+44 20 7447 7403

New York
Muys Sniijders,
+ 212 644 9020
Jeremy Goldsmith,
+ 1 917 206 1656

Jacqueline Towers-Perkins,
+1 212 644 9039
Lisa De Simone,
+1 917 206 1607

Los Angeles
Sharon Squires
+1 323 436 5404

Laura Bjorstad
+1 323 436 5446

**Prints and Multiples
London**

Lucia Tro Santafe
+44 20 7468 8262

New York
Deborah Ripley
+1 212 644 9059

Los Angeles
Morisa Rosenberg
+1 323 447 9374

**Russian Art
London**

Daria Khristova
+44 20 7468 8334

New York
Yelena Harbick
+1 212 644 9136

**Scientific Instruments
London**

Jon Baddeley
+44 20 7393 3872

New York
Jonathan Snellenburg
+1 212 461 6530

**Scottish Pictures
Edinburgh**

Chris Brickley
+44 131 240 2297

**Silver & Gold Boxes
London**

Ellis Finch
+44 20 7393 3973

**Sporting Guns
London**

Patrick Hawes
+44 20 7393 3815

**Space History
San Francisco**

Adam Stackhouse
+1 415 503 3266

**Travel Pictures
London**

Veronique Scorer
+44 20 7393 3962

**Watches &
Wristwatches**

London
Jonathan Darracott
+44 20 7447 7412

New York
Jonathan Snellenburg
+1 212 461 6530

Hong Kong
Tim Bourne
+852 3607 0021

**Whisky
Edinburgh**

Martin Green
+44 131 225 2266

Hong Kong
Daniel Lam
+852 2918 4321

**Wine
London**

Richard Harvey
+44 20 7468 5811

San Francisco
Christine Ballard
+1 415 503 3221

Hong Kong
Daniel Lam
+852 2918 4321

Client Services Departments

U.S.A.

San Francisco

(415) 861 7500
(415) 861 8951 fax
Monday - Friday, 9am to 5pm

Los Angeles

(323) 850 7500
(323) 850 6090 fax
Monday - Friday, 9am to 5pm

New York

(212) 644 9001
(212) 644 9009 fax
Monday - Friday, 9am to 5pm

Toll Free

(800) 223 2854

U.K.

Monday to Friday 8.30 to 6.00
+44 (0) 20 7447 7447

Bids

+44 (0) 20 7447 7447
+44 (0) 20 7447 7401 fax
To bid via the internet please
visit bonhams.com

• Indicates independent contractor

Bonhams Global Network

International Salerooms

London

101 New Bond Street
London W1S 1SR
+44 20 7447 7447
+44 20 7447 7400 fax

New York

580 Madison Avenue
New York, NY
10022
+1 (212) 644 9001
+1 (212) 644 9007 fax

Hong Kong

Suite 2001
One Pacific Place
88 Queensway
Admiralty
Hong Kong
+852 2918 4321
+852 2918 4320 fax

London

Montpelier Street London
SW7 1HH
+44 20 7393 3900
+44 20 7393 3905 fax

Offices and Associated Companies

AFRICA

Nigeria

Neil Coventry
+234 (0)8110 033 792
+27 (0)7611 20171
neil.coventry@bonhams.com

South Africa - Johannesburg

Penny Culverwell
+27 (0)71 342 2670
penny.culverwell@bonhams.com

AUSTRALIA

Sydney

97-99 Queen Street,
Woollahra, NSW 2025
Australia
+61 (0) 2 8412 2222
+61 (0) 2 9475 4110 fax
info.aus@bonhams.com

Melbourne

Como House
Como Avenue
South Yarra
Melbourne VIC 3141
Australia
+61 (0) 3 8640 4088
+61 (0) 2 9475 4110 fax
info.aus@bonhams.com

ASIA

Beijing

Jessica Zhang
Unit S102A, Beijing
Lufthansa Center,
50 Liangmaqiao Road,
Chaoyang District,
Beijing 100125, China
+86 (0) 10 8424 3188
beijing@bonhams.com

Singapore

Bernadette Rankine
11th Floor, Wisma Atria
435 Orchard Road
Singapore 238877
+65 (0) 6701 8038
+65 (0) 6701 8001 fax
bernadette.rankine@bonhams.com

Taiwan

37th Floor, Taipei 101
Tower
No. 7 Xinyi Road,
Section 5
Taipei, 100
+886 2 8758 2898
+886 2 8758 2897 fax
taiwan@bonhams.com

EUROPE

Austria

Thomas Kamm
+49 (0) 89 2420 5812
austria@bonhams.com

Belgium

Boulevard
Saint-Michel 101
1040 Brussels
+32 (0) 2 736 5076
belgium@bonhams.com

France

4 rue de la Paix
75002 Paris
+33 (0) 1 42 61 10 10
paris@bonhams.com

Germany - Cologne

Katharina Schmid
+49 (0) 221 9865 3419
+49 (0) 157 9234 6717
cologne@bonhams.com

Germany - Hamburg

Marie Becker Lingenthal
+49 (0) 17 4236 0022
hamburg@bonhams.com

Germany - Munich

Maximilianstrasse 52
80538 Munich
+49 (0) 89 2420 5812
munich@bonhams.com

Germany - Stuttgart

Neue Brücke 2
New Bridge Offices
70173 Stuttgart
+49 (0) 711 2195 2640
+49 (0) 157 9234 6717
stuttgart@bonhams.com

Greece

7 Neofytou Vamva
Street
Athens 10674
+30 (0) 210 3636 404
athens@bonhams.com

Ireland

31 Molesworth Street
Dublin 2
+353 (0) 1 602 0990
ireland@bonhams.com

Italy - Milan

Via Boccaccio 22
20123 Milano
+39 0 2 4953 9020
milan@bonhams.com

Italy - Rome

Via Sicilia 50
00187 Roma
+39 06 485 900
rome@bonhams.com

The Netherlands

De Lairessestraat 154
1075 HL Amsterdam
+31 (0) 20 67 09 701
amsterdam@bonhams.com

Portugal

Rua Bartolomeu Dias
n°160. 1°
Belem
1400-031 Lisbon
+351 218 293 291
portugal@bonhams.com

Spain - Barcelona

Teresa Ybarra
+34 930 156 686
+34 680 347 606
barcelona@bonhams.com

Spain - Madrid

Núñez de Balboa no
4-1C
28001 Madrid
+34 915 78 17 27
madrid@bonhams.com

Switzerland - Geneva

Rue Etienne-Dumont 10
1204 Geneva
+41 (0) 22 300 3160
geneva@bonhams.com

Switzerland - Zurich

Andrea Bodmer
Dreikönigstrasse 31a
8002 Zürich
+41 44 281 9535
zurich@bonhams.com

NORTH AMERICA

USA

Representatives:
Arizona
Terri Adrian-Hardy
+1 (602) 859 1843
arizona@bonhams.com

California Central Valley

David Daniel
+1 (916) 364 1645
sacramento@bonhams.com

California Palm Springs

Brooke Sivo
+1 (760) 350 4255
palmsprings@bonhams.com

California San Diego

Brooke Sivo
+1 (760) 567 1744
sandiego@bonhams.com

Colorado

Lance Vigil
+1 (720) 355 3737
colorado@bonhams.com

Florida

April Matteini
+1 (305) 978 2459
Miami@bonhams.com
Alexis Butler
+1 (305) 878 5366
Miami@bonhams.com

Georgia

Mary Moore Bethea
+1 (404) 842 1500
georgia@bonhams.com

Illinois & Midwest

Natalie B. Waechter
+1 (773) 267 3300
Shawn Marsh
+1 (773) 680 2881
chicago@bonhams.com

Edinburgh

22 Queen Street
Edinburgh
EH2 1JX
+44 131 225 2266
+44 131 220 2547 fax

Los Angeles

7601 W. Sunset Boulevard
Los Angeles
CA 90046
+1 (323) 850 7500
+1 (323) 850 6090 fax

San Francisco

220 San Bruno Avenue
San Francisco
CA 94103
+1 (415) 861 7500
+1 (415) 861 8951 fax

Massachusetts

Amy Corcoran
+1 (617) 742 0909
boston@bonhams.com

Nevada

David Daniel
+1 (775) 831 0330
nevada@bonhams.com

New Mexico

Terri Adrian-Hardy
+1 (602) 859 1843
newmexico@bonhams.com

Oregon

Sheryl Acheson
+1 (971) 727 7797
oregon@bonhams.com

Texas – Dallas

Mary Holm
+1 (214) 557 2716
dallas@bonhams.com

Texas – Houston

Lindsay Davis
+1 (713) 855 7452
texas@bonhams.com

Virginia

Gertraud Hechl
+1 (202) 422 2733
virginia@bonhams.com

Washington

Heather O'Mahony
+1 (206) 566 3913
seattle@bonhams.com

**Washington DC
Mid-Atlantic Region**

Gertraud Hechl
+1 (202) 422 2733
washingtonDC@bonhams.com

Canada**Toronto, Ontario**

Kristin Kearney
340 King St East
2nd Floor, Office 213
Toronto ON
M5A 1K8
+1 (416) 462 9004
info.ca@bonhams.com

Montreal, Quebec

David Kelsey
+1 (514) 894 1138
info.ca@bonhams.com

MIDDLE EAST**Israel**

Joslyne Halibard
+972 (0)54 553 5337
joslyne.halibard@bonhams.com

SOUTH AMERICA**Brazil**

+55 11 3031 4444
+55 11 3031 4444
fax

UNITED KINGDOM**South East
England****Guildford**

Millmead,
Guildford,
Surrey GU2 4BE
+44 1483 504 030
+44 1483 450 205
fax

Isle of Wight

+44 1273 220 000

Representative:

Brighton & Hove

Tim Squire-Sanders
+44 1273 220 000

West Sussex

+44 (0) 1273 220 000

**South West
England****Bath**

Queen Square House
Charlotte Street
Bath BA1 2LL
+44 1225 788 988
+44 1225 446 675
fax

Cornwall – Truro

36 Lemon Street
Truro
Cornwall
TR1 2NR
+44 1872 250 170
+44 1872 250 179
fax

Exeter

The Lodge
Southernhay West
Exeter, Devon
EX1 1JG
+44 1392 425 264
+44 1392 494 561
fax

Tetbury

Eight Bells House
14 Church Street
Tetbury
Gloucestershire
GL8 8JG
+44 1666 502 200
+44 1666 505 107
fax

Representatives:

Dorset

Bill Allan
+44 1935 815 271

**East Anglia and
Bury St. Edmunds**

Michael Steel
+44 1284 716 190

Norfolk

The Market Place
Reepham
Norfolk NR10 4JJ
+44 1603 871 443
+44 1603 872 973
fax

Midlands**Knowle**

The Old House
Station Road
Knowle, Solihull
West Midlands
B93 0HT
+44 1564 776 151
+44 1564 778 069
fax

Oxford

Banbury Road
Shipton on Cherwell
Kidlington OX5 1JH
+44 1865 853 640
+44 1865 372 722
fax

**Yorkshire & North
East England****Leeds**

The West Wing
Bowcliffe Hall
Bramham
Leeds
LS23 6LP
+44 113 234 5755
+44 113 244 3910
fax

North West England**Chester**

2 St Johns Court,
Vicars Lane,
Chester,
CH1 1QE
+44 1244 313 936
+44 1244 340 028
fax

Manchester

The Stables
213 Ashley Road
Hale WA15 9TB
+44 161 927 3822
+44 161 927 3824
fax

Channel Islands**Jersey**

La Chasse
La Rue de la Vallee
St Mary
Jersey JE3 3DL
+44 1534 722 441
+44 1534 759 354
fax

Representative:

Guernsey

+44 1481 722 448

Scotland**Bonhams West
of Scotland**

Kirkhill House
Broom Road East
Newton Mearns
Glasgow
G77 5LL
+44 141 223 8866

Wales

Representatives:

Cardiff

Jeff Muse
+44 2920 727 980

Auction Registration Form

(Attendee / Absentee / Online / Telephone Bidding)

Please circle your bidding method above.

--	--	--	--

Paddle number (for office use only)

General Notice: This sale will be conducted in accordance with Bonhams Conditions of Sale, and your bidding and buying at the sale will be governed by such terms and conditions. Please read the Conditions of Sale in conjunction with the Buyer's Guide relating to this sale and other published notices and terms relating to bidding. Payment by personal or business check may result in your property not being released until purchase funds clear our bank. Checks must be drawn on a U.S. bank.

Notice to Absentee Bidders: In the table below, please provide details of the lots on which you wish to place bids at least 24 hours prior to the sale. Bids will be rounded down to the nearest increment. Please refer to the Buyer's Guide in the catalog for further information relating to instructions to Bonhams to execute absentee bids on your behalf. Bonhams will endeavor to execute bids on your behalf but will not be liable for any errors or non-executed bids.

Notice to First Time Bidders: New clients are requested to provide photographic proof of ID - passport, driving license, ID card, together with proof of address - utility bill, bank or credit card statement etc. Corporate clients should also provide a copy of their articles of association / company registration documents, together with a letter authorizing the individual to bid on the company's behalf. Failure to provide this may result in your bids not being processed. For higher value lots you may also be asked to provide a bankers reference.

Notice to online bidders; If you have forgotten your username and password for www.bonhams.com, please contact Client Services.

If successful

- I will collect the purchases myself
- Please contact me with a shipping quote (if applicable)
- I will arrange a third party to collect my purchase(s)

Please email or fax the completed Registration Form and requested information to:

Bonhams Client Services Department
7601 W. Sunset Blvd
Los Angeles, California 90046
Tel +1 (323) 850 7500
Fax +1 (323) 850 6090
bids.us@bonhams.com

Bonhams

Sale title: California Jewels		Sale date: Monday April 15, 2019	
Sale no. 25329		Sale venue: Los Angeles	
General Bid Increments:			
\$10 - 200by 10s		\$10,000 - 20,000by 1,000s	
\$200 - 500by 20 / 50 / 80s		\$20,000 - 50,000by 2,000 / 5,000 / 8,000s	
\$500 - 1,000by 50s		\$50,000 - 100,000by 5,000s	
\$1,000 - 2,000by 100s		\$100,000 - 200,000by 10,000s	
\$2,000 - 5,000by 200 / 500 / 800s		above \$200,000at the auctioneer's discretion	
\$5,000 - 10,000by 500s		The auctioneer has discretion to split any bid at any time.	
Customer Number		Title	
First Name		Last Name	
Company name (to be invoiced if applicable)			
Address			
City		County / State	
Post / Zip code		Country	
Telephone mobile		Telephone daytime	
Telephone evening		Fax	
Telephone bidders: indicate primary and secondary contact numbers by writing ① or ② next to the telephone number.			
E-mail (in capitals) _____			
By providing your email address above, you authorize Bonhams to send you marketing materials and news concerning Bonhams and partner organizations. Bonhams does not sell or trade email addresses.			
I am registering to bid as a private client <input type="checkbox"/>		I am registering to bid as a trade client <input type="checkbox"/>	
Resale: please enter your resale license number here _____ We may contact you for additional information.			

SHIPPING	
Shipping Address (if different than above):	
Address: _____	Country: _____
City: _____	Post/ZIP code: _____

Please note that all telephone calls are recorded.

Type of bid (A-Absentee, T-Telephone)	Lot no.	Brief description (In the event of any discrepancy, lot number and not lot description will govern.) If you are bidding online there is no need to complete this section.	MAX bid in US\$ (excluding premium and applicable tax) Emergency bid for telephone bidders only*

You instruct us to execute each absentee bid up to the corresponding bid amount indicated above.

* Emergency Bid: A maximum bid (exclusive of Buyer's Premium and tax) to be executed by Bonhams only if we are unable to contact you by telephone or should the connection be lost during bidding.

BY SIGNING THIS FORM YOU AGREE THAT YOU HAVE READ AND UNDERSTAND OUR CONDITIONS OF SALE AND SHALL BE LEGALLY BOUND BY THEM, AND YOU AGREE TO PAY THE BUYER'S PREMIUM, ANY APPLICABLE TAXES, AND ANY OTHER CHARGES MENTIONED IN THE BUYER'S GUIDE OR CONDITIONS OF SALE. THIS AFFECTS YOUR LEGAL RIGHTS.	
Your signature: _____	Date: _____





Bonhams
7601 W. Sunset Boulevard
Los Angeles, California 90046

+1 323 850 7500
bonhams.com

AUCTIONEERS SINCE 1793